



# Business Year Comparisons

**BY ~ 2008 vs. BY ~ 2007**

*\* (52 Business Weeks)*

*\* (53 Business Weeks)*

**Week Ending: 04/19/08**

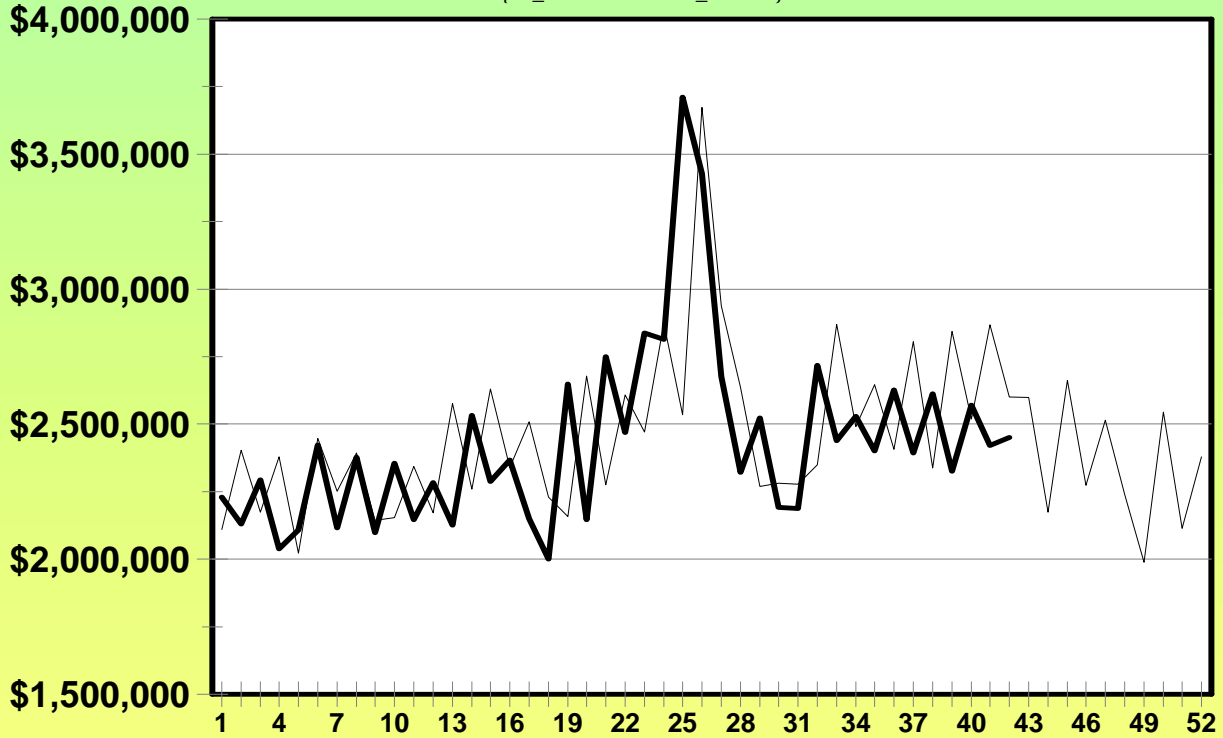
Week Ending: 04/19/08



# Scratch-its

## BY\_2008 -vs- BY\_2007

*SUM{SI\_activations + SI\_returns}*



— BY\_2007 — BY\_2008

	This Year	Last Year	Difference	% Change
Last Week	\$2,421,469	\$2,867,216	-\$445,747	-15.55%
Current Week	\$2,451,038	\$2,601,166	-\$150,128	-5.77%
Year to Date	\$102,247,206	\$103,949,164	-\$1,701,958	-1.64%

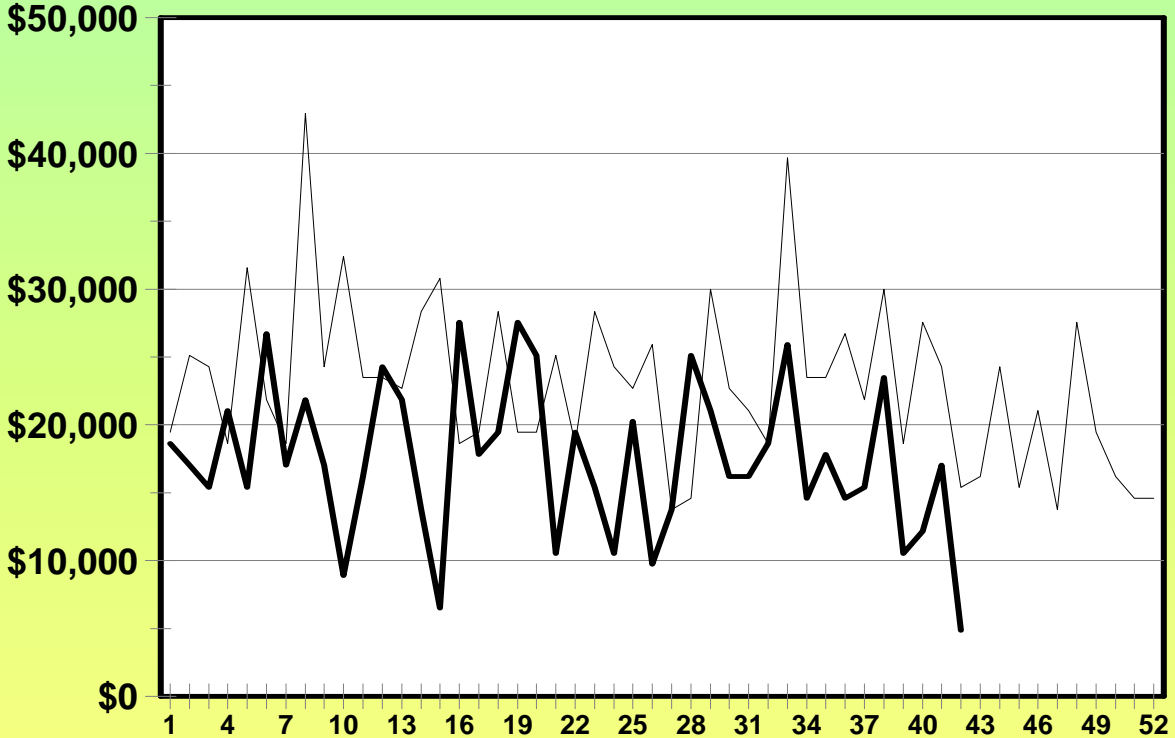
Week Ending: 04/19/08



# Breakopens

## BY\_2008 -vs- BY\_2007

*SUM{BO\_distribution + BO\_returns}*



— BY\_2007 — BY\_2008

	This Year	Last Year	Difference	% Change
Last Week	\$17,010	\$24,300	-\$7,290	-30.00%
Current Week	\$4,860	\$15,390	-\$10,530	-68.42%
Year to Date	\$732,240	\$1,010,070	-\$277,830	-27.51%

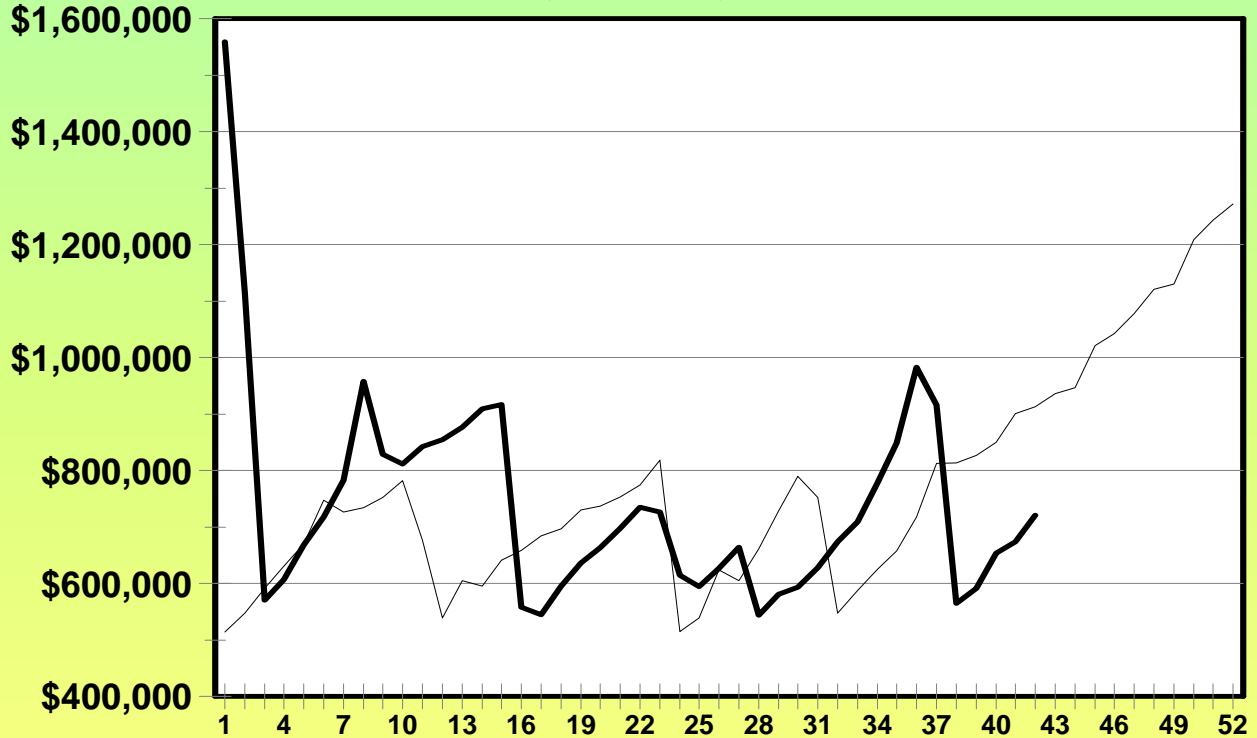
Week Ending: 04/19/08



# Megabucks

## BY\_2008 -vs- BY\_2007

(MB\_Gross\_Sales)



— BY\_2007 — BY\_2008

	This Year	Last Year	Difference	% Change
Last Week	\$674,027	\$900,921	-\$226,894	-25.18%
Current Week	\$720,564	\$912,818	-\$192,254	-21.06%
Year to Date	\$31,131,084	\$29,069,282	\$2,061,802	7.09%

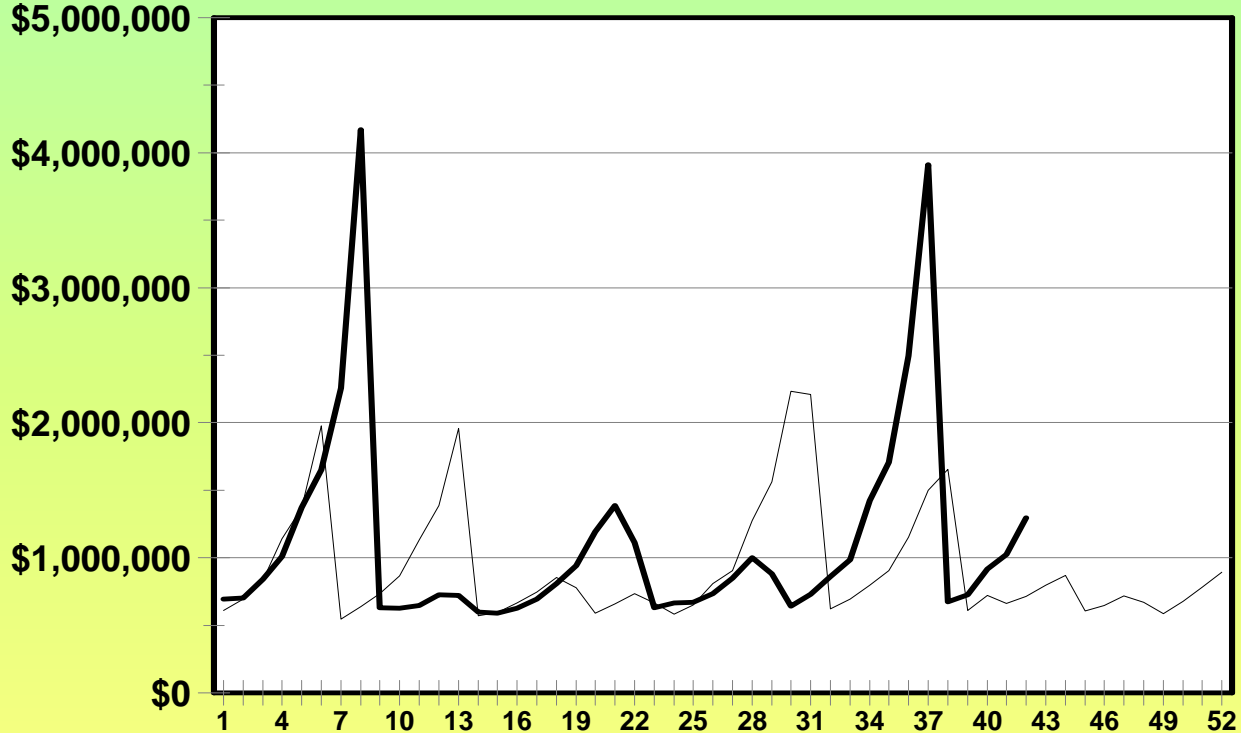
Week Ending: 04/19/08



# Powerball

## BY\_2008 -vs- BY\_2007

(PB\_Gross\_Sales)



— BY\_2007 — BY\_2008

	This Year	Last Year	Difference	% Change
Last Week	\$1,023,068	\$663,457	\$359,611	54.20%
Current Week	\$1,296,157	\$712,090	\$584,067	82.02%
Year to Date	\$46,825,404	\$41,000,741	\$5,824,663	14.21%

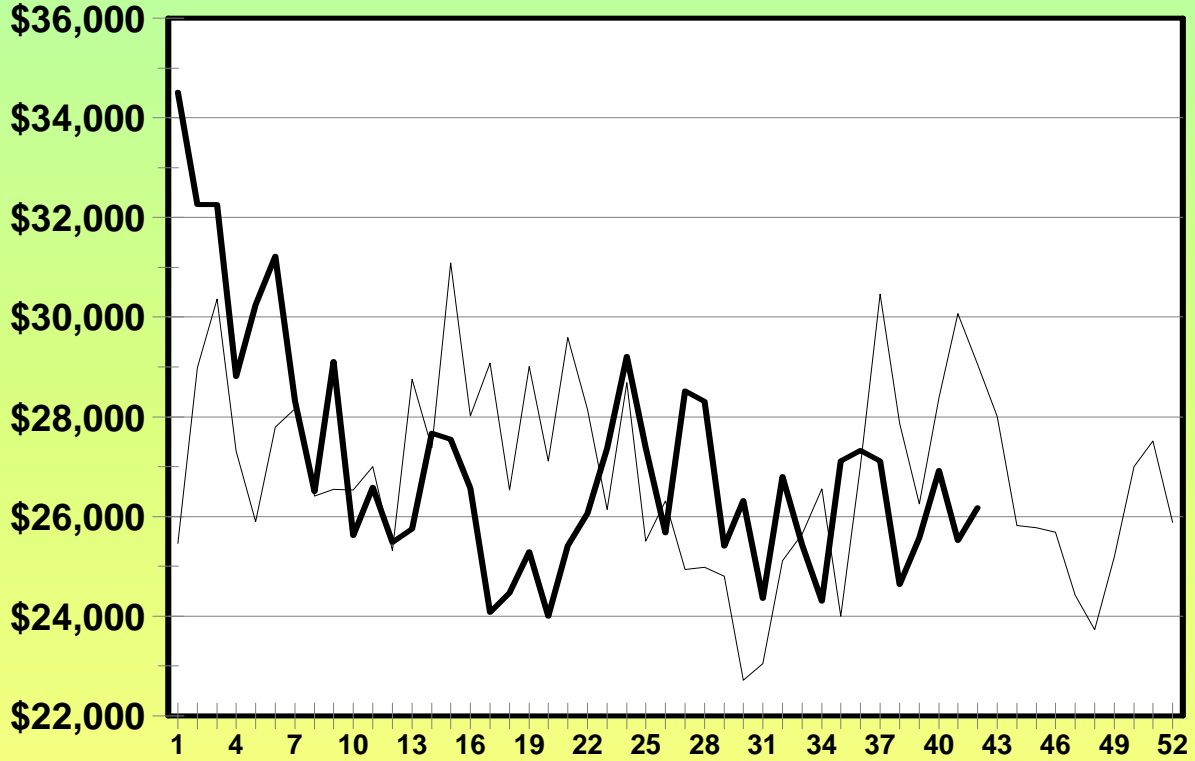
Week Ending: 04/19/08



# Pick 4

## BY\_2008 -vs- BY\_2007

(P4\_Gross\_Sales)



— BY\_2007 — BY\_2008

	This Year	Last Year	Difference	% Change
Last Week	\$25,516	\$30,070	-\$4,554	-15.14%
Current Week	\$26,179	\$29,053	-\$2,874	-9.89%
Year to Date	\$1,137,253	\$1,138,095	-\$842	-0.07%

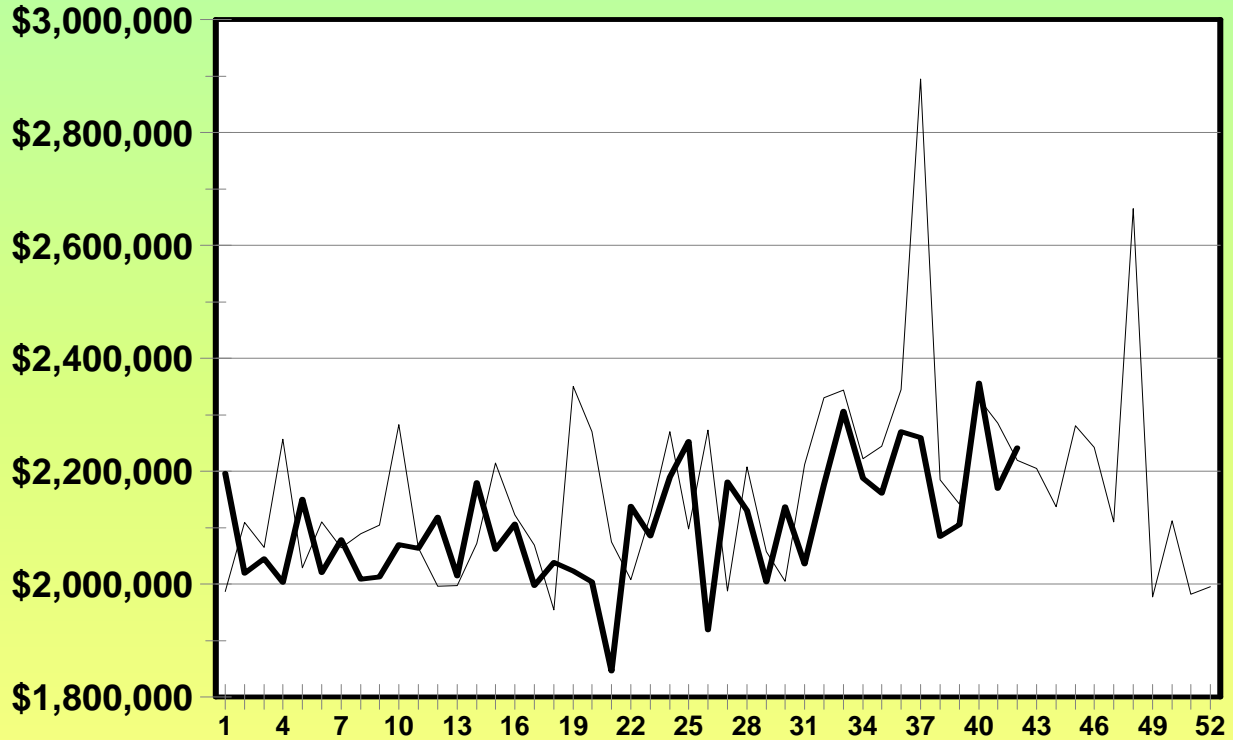
Week Ending: 04/19/08



# Keno

## BY\_2008 -vs- BY\_2007

*(KN\_Gross\_Sales)*



— BY\_2007 — BY\_2008

	This Year	Last Year	Difference	% Change
Last Week	\$2,169,454	\$2,285,614	-\$116,160	-5.08%
Current Week	\$2,240,775	\$2,219,005	\$21,770	0.98%
Year to Date	\$88,442,299	\$91,057,646	-\$2,615,347	-2.87%

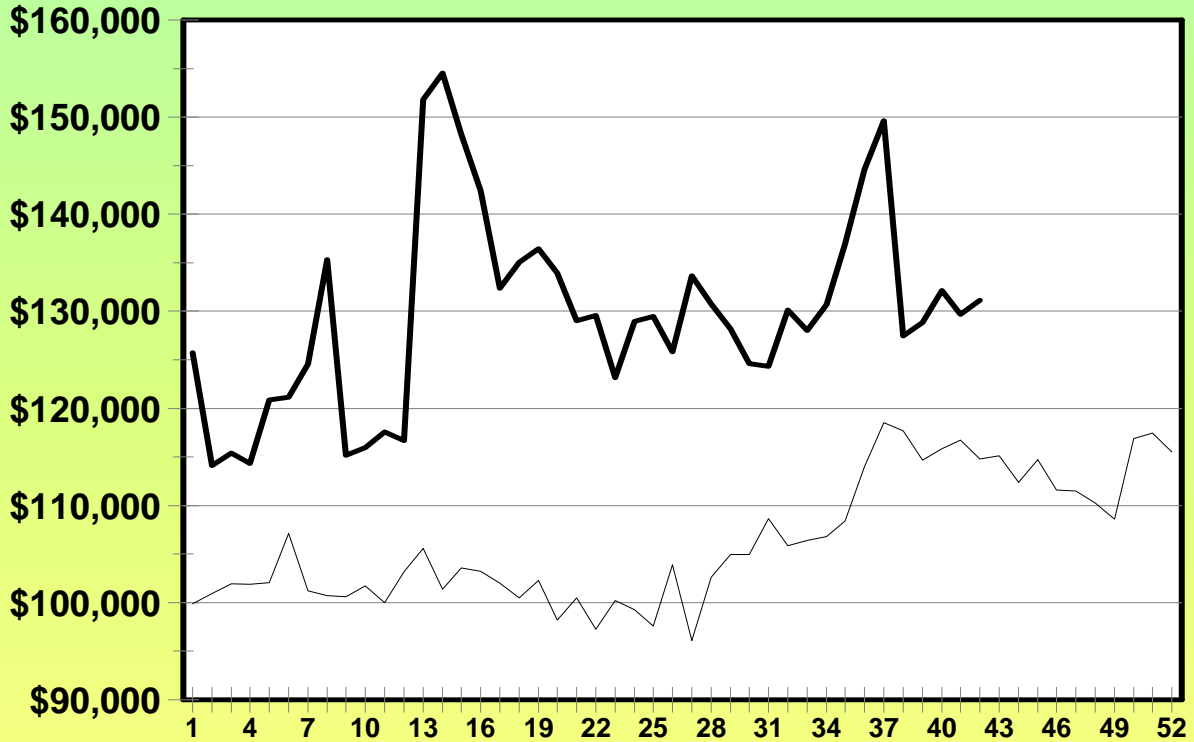
Week Ending: 04/19/08



# Win for Life

## BY\_2008 -vs- BY\_2007

(WL\_Gross\_Sales)



— BY\_2007 — BY\_2008

	This Year	Last Year	Difference	% Change
Last Week	\$129,680	\$116,750	\$12,930	11.07%
Current Week	\$131,140	\$114,798	\$16,342	14.24%
Year to Date	\$5,448,306	\$4,393,756	\$1,054,550	24.00%

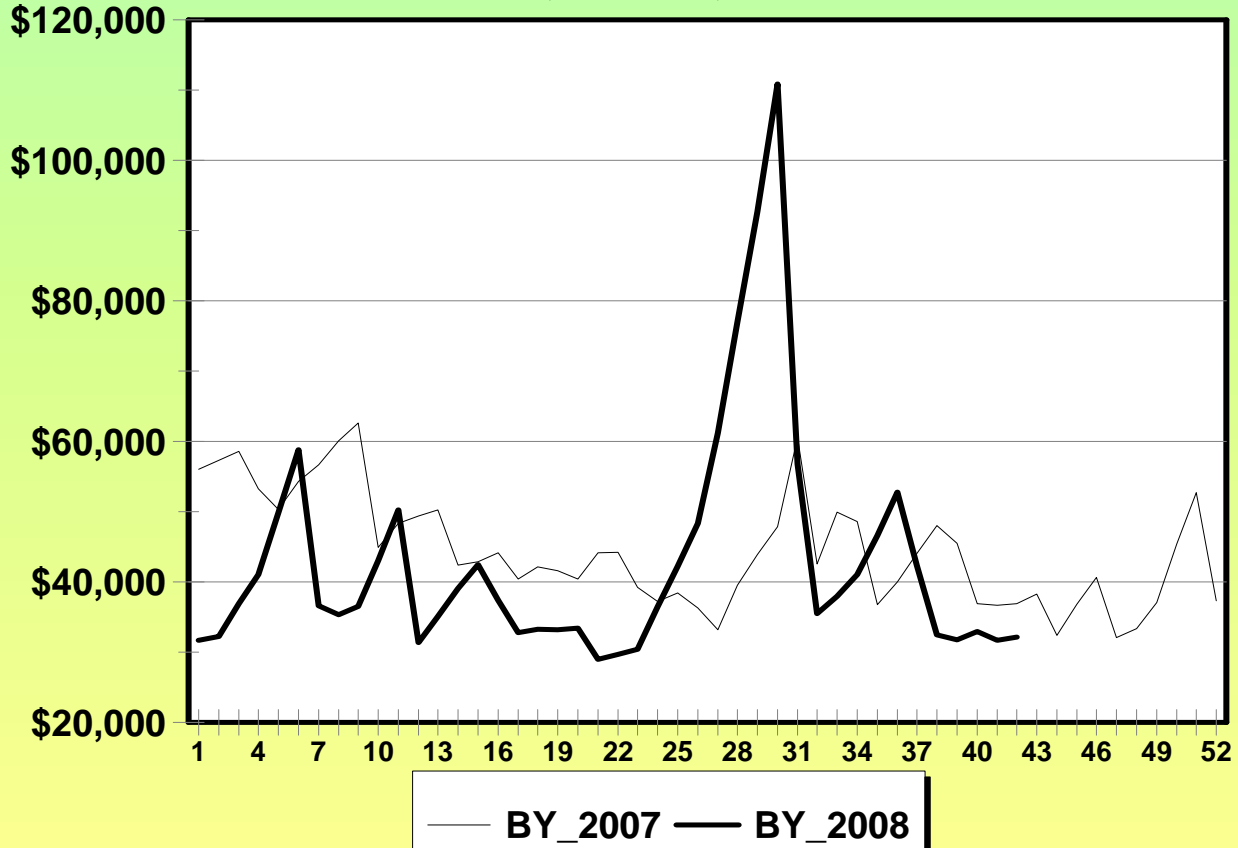
Week Ending: 04/19/08



# Lucky Lines

## BY\_2008 -vs- BY\_2007

(LL\_Gross\_Sales)



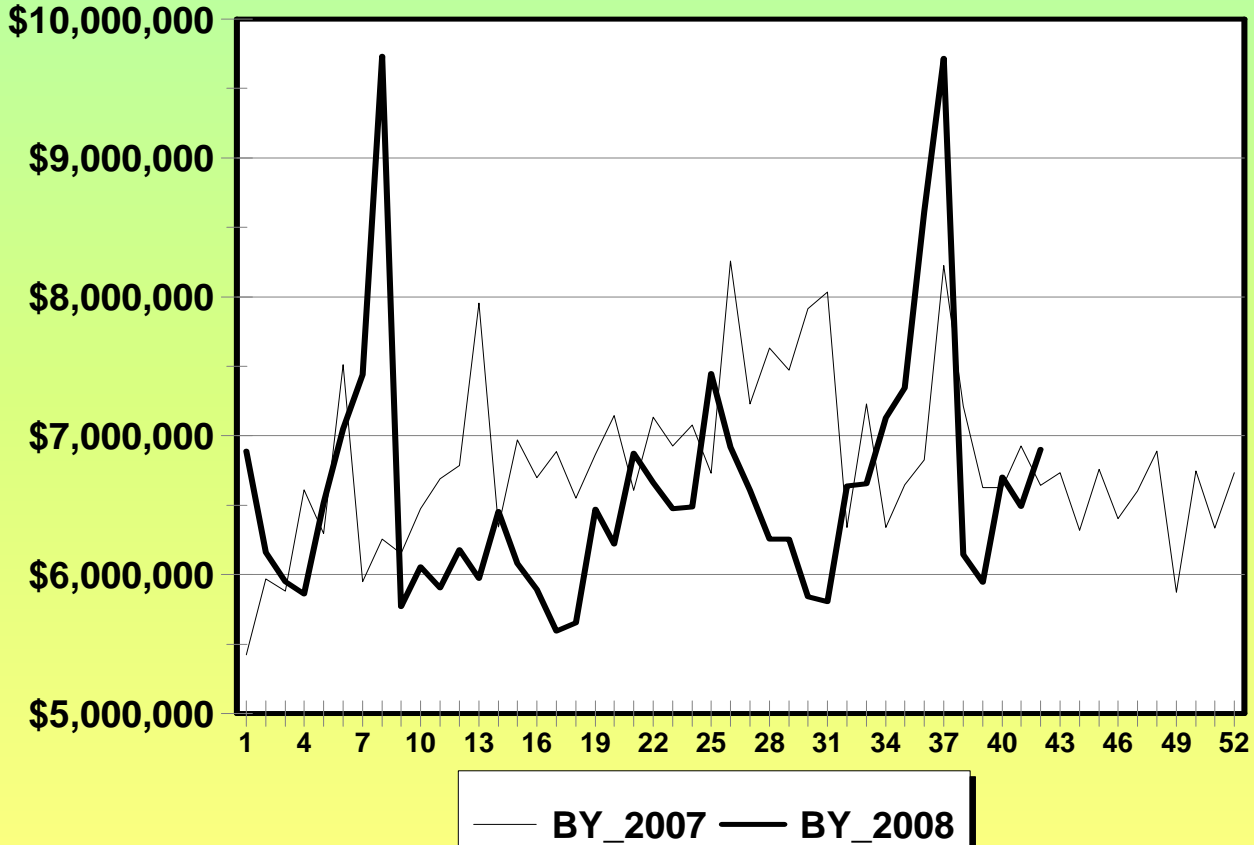
	This Year	Last Year	Difference	% Change
Last Week	\$31,682	\$36,632	-\$4,950	-13.51%
Current Week	\$32,166	\$36,868	-\$4,702	-12.75%
Year to Date	\$1,801,718	\$1,926,198	-\$124,480	-6.46%

Week Ending: 04/19/08



# Traditional Only

BY\_2008 -vs- BY\_2007



	This Year	Last Year	Difference	% Change
Last Week	\$6,491,906	\$6,924,960	-\$433,054	-6.25%
Current Week	\$6,902,879	\$6,641,188	\$261,691	3.94%
Year to Date	\$277,765,510	\$288,068,133	-\$10,302,623	-3.58%

\*Sports Action & Scoreboard Gross Sales Last Year to Date:

Sports Action:	\$14,009,541	} Conclusion_LYTD_Sales
Scoreboard:	\$513,640	
<b>Total:</b>	<b>\$14,523,181</b>	

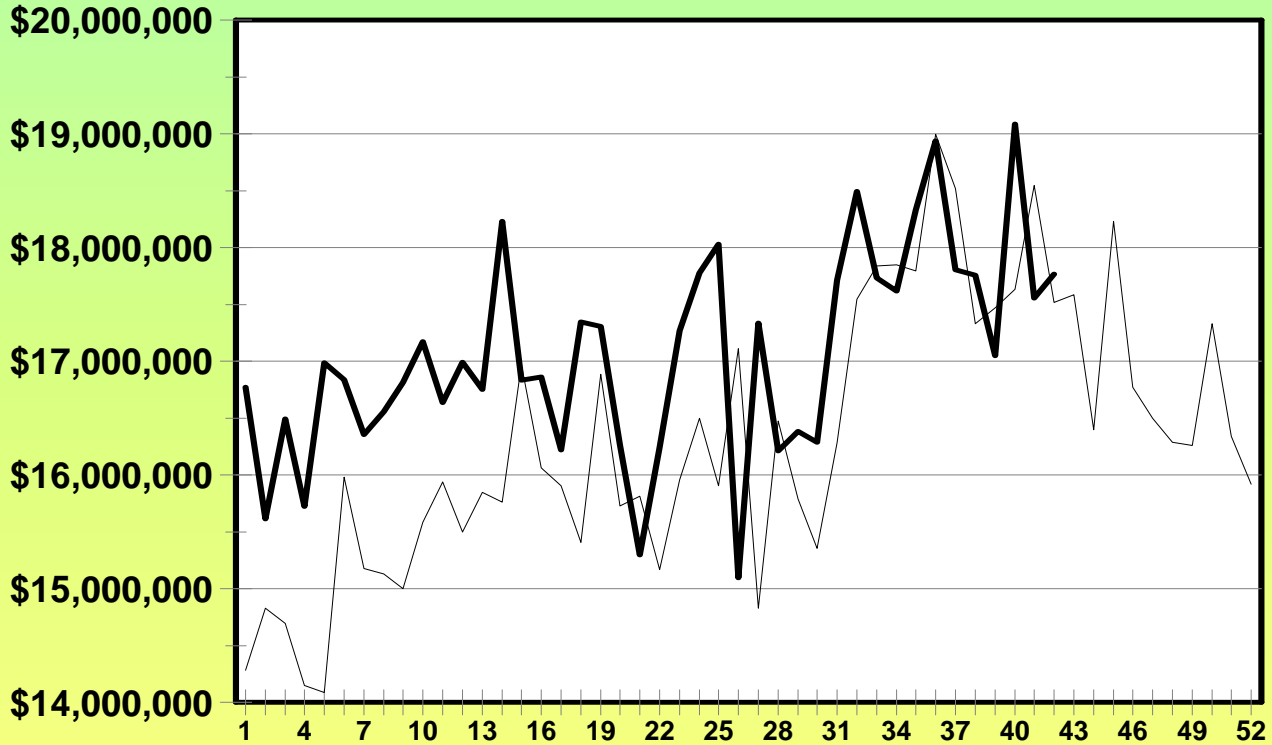
Week Ending: 04/19/08



# Video

## BY\_2008 -vs- BY\_2007

(VL\_Gross\_Sales)



— BY\_2007 — BY\_2008

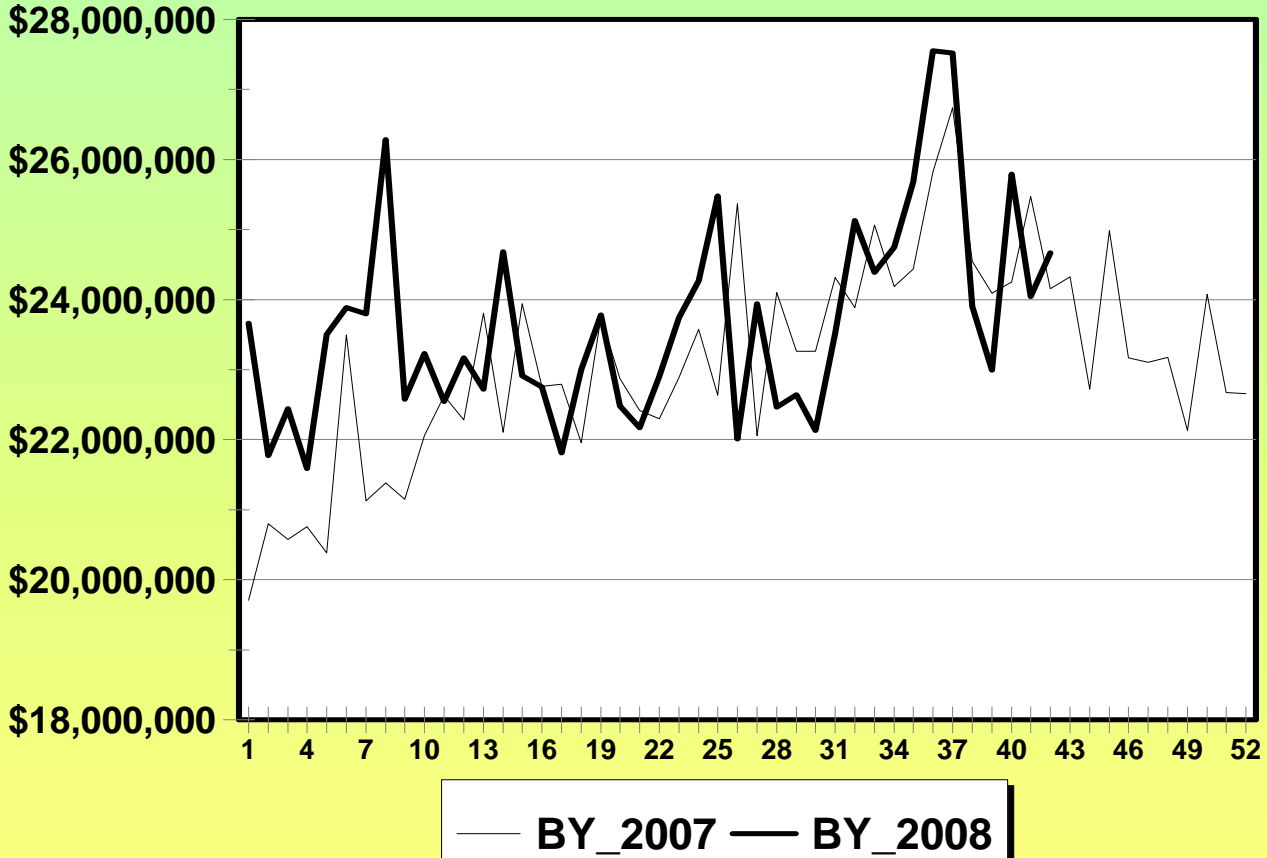
	This Year	Last Year	Difference	% Change
Last Week	\$17,555,738	\$18,546,959	-\$991,221	-5.34%
Current Week	\$17,764,107	\$17,518,719	\$245,388	1.40%
Year to Date	\$716,513,300	\$681,091,531	\$35,421,769	5.20%

Week Ending: 04/19/08



# Total Lottery Sales

## BY\_2008 -vs- BY\_2007



	This Year	Last Year*	Difference	% Change
Last Week	\$24,047,644	\$25,471,919	-\$1,424,275	-5.59%
Current Week	\$24,666,986	\$24,159,907	\$507,079	2.10%
Year to Date	\$994,278,810	\$969,159,664	\$25,119,146	2.59%

\*Sports Action & Scoreboard Gross Sales Last Year to Date:

Sports Action:	\$14,009,541	} Conclusion_LYTD_Sales
Scoreboard:	\$513,640	
<b>Total:</b>	<b>\$14,523,181</b>	