



Business Year Comparisons

BY ~ 2009 vs. **BY ~ 2008**
(52 Business Weeks) *(52 Business Weeks)*

Week Ending: 07/19/08

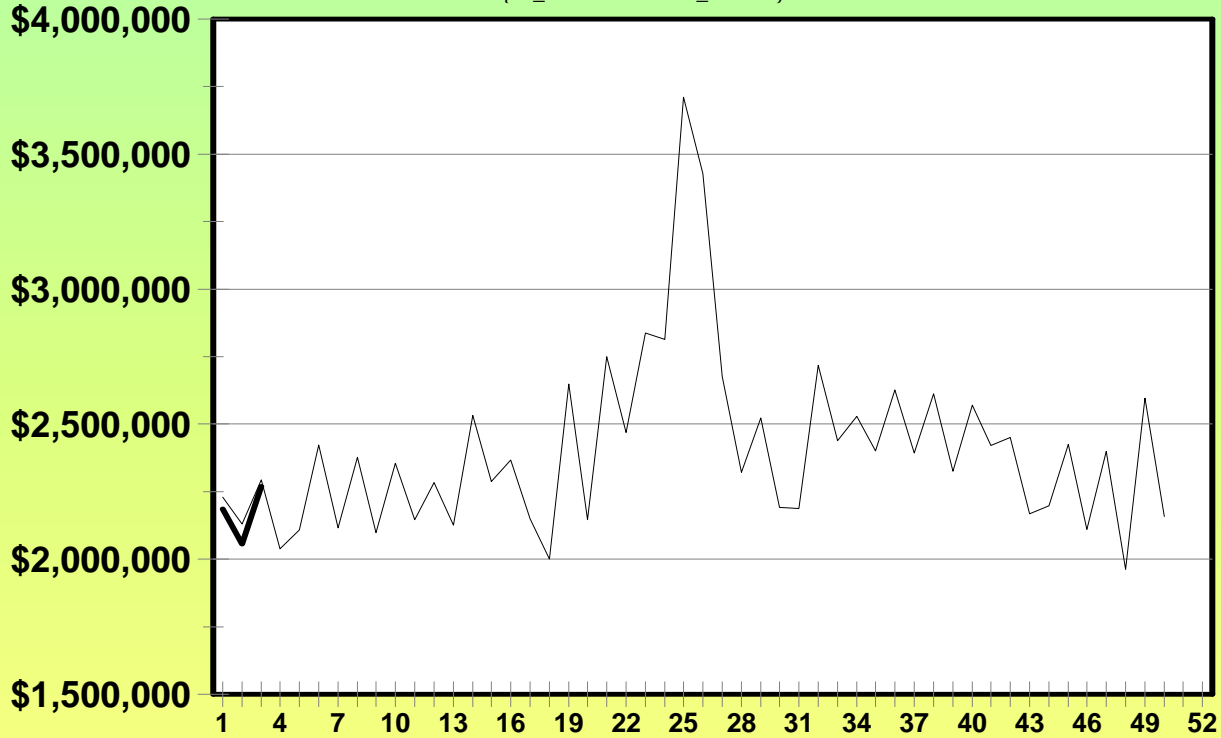
Week Ending: 07/19/08



Scratch-its

BY_2009 -vs- BY_2008

SUM{SI_activations + SI_returns}



— BY_2008 — BY_2009

	This Year	Last Year	Difference	% Change
Last Week	\$2,056,762	\$2,129,395	-\$72,633	-3.41%
Current Week	\$2,268,621	\$2,293,662	-\$25,041	-1.09%
Year to Date	\$6,511,628	\$6,652,116	-\$140,488	-2.11%

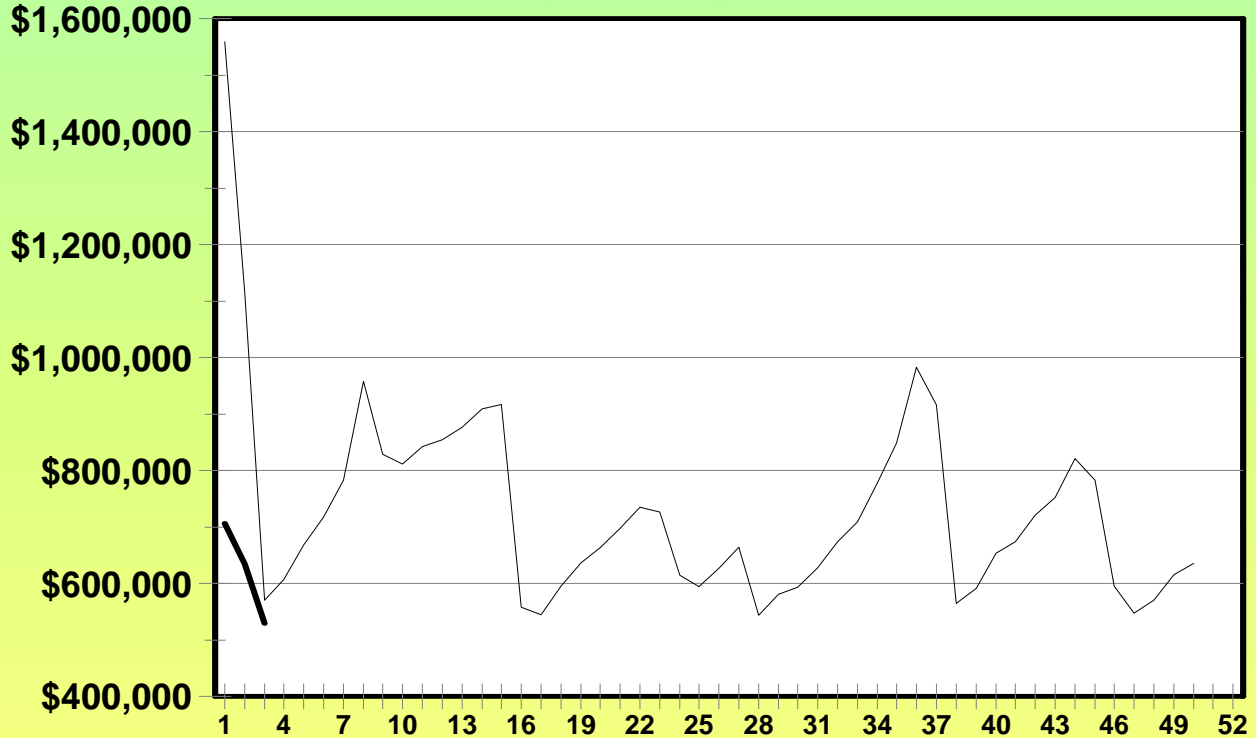
Week Ending: 07/19/08



Megabucks

BY_2009 -vs- BY_2008

(MB_Gross_Sales)



— BY_2008 — BY_2009

	This Year	Last Year	Difference	% Change
Last Week	\$634,331	\$1,114,472	-\$480,141	-43.08%
Current Week	\$529,656	\$570,158	-\$40,502	-7.10%
Year to Date	\$1,869,948	\$3,243,569	-\$1,373,621	-42.35%

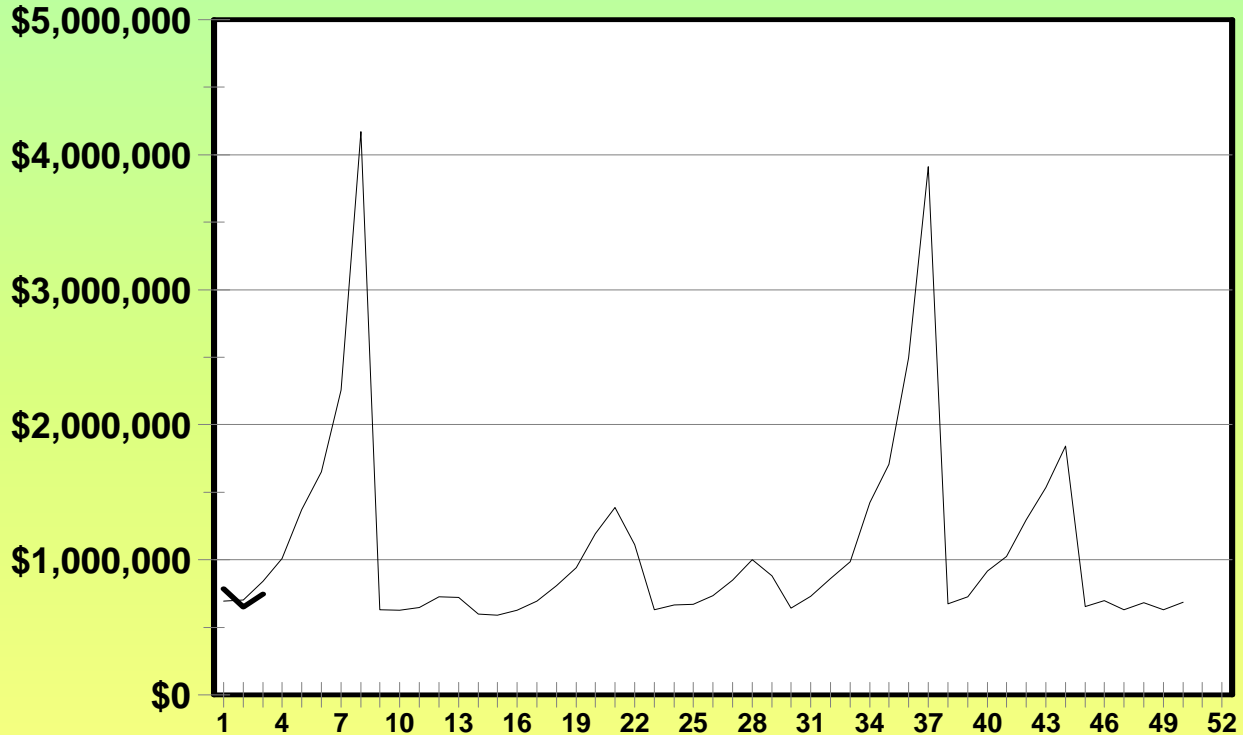
Week Ending: 07/19/08



Powerball

BY_2009 -vs- BY_2008

(PB_Gross_Sales)



— BY_2008 — BY_2009

	This Year	Last Year	Difference	% Change
Last Week	\$649,211	\$701,473	-\$52,262	-7.45%
Current Week	\$747,377	\$841,647	-\$94,270	-11.20%
Year to Date	\$2,180,895	\$2,238,341	-\$57,446	-2.57%

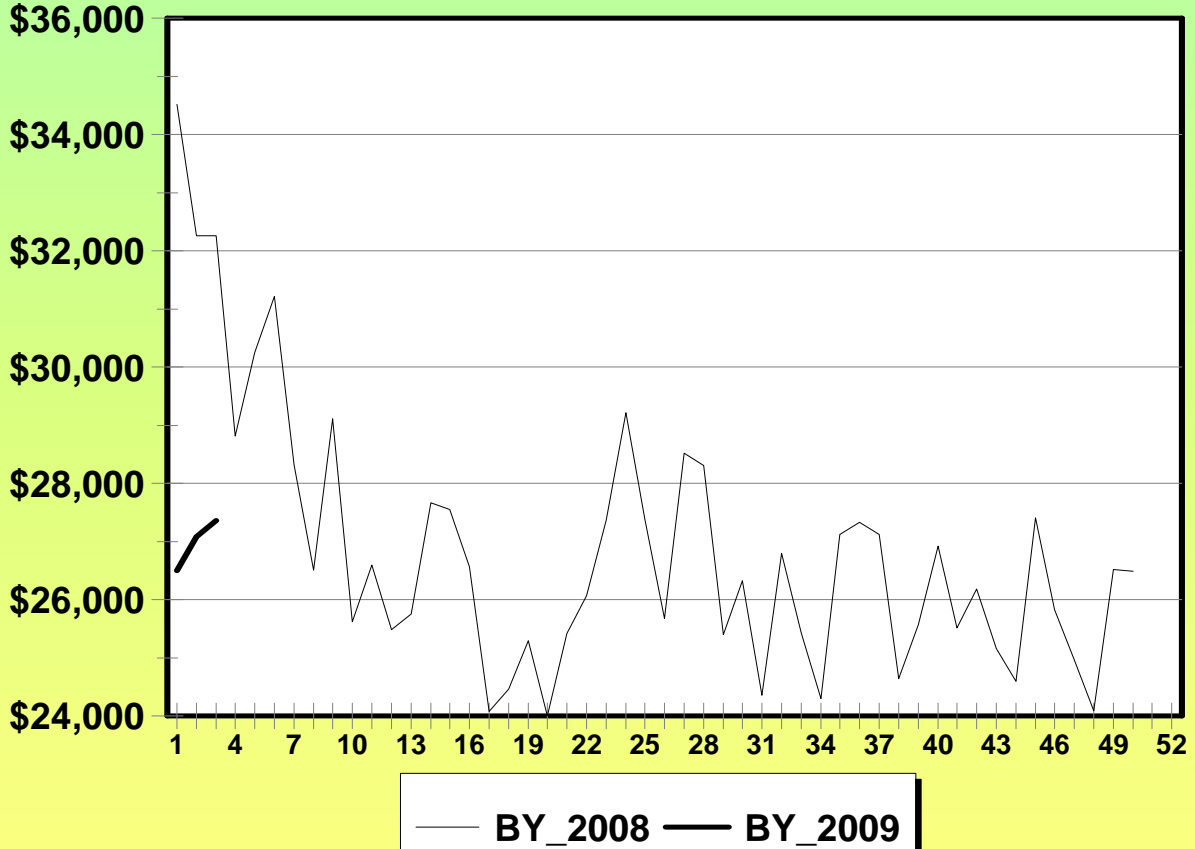
Week Ending: 07/19/08



Pick 4

BY_2009 -vs- BY_2008

(P4_Gross_Sales)



	This Year	Last Year	Difference	% Change
Last Week	\$27,085	\$32,261	-\$5,176	-16.04%
Current Week	\$27,360	\$32,256	-\$4,896	-15.18%
Year to Date	\$80,943	\$99,032	-\$18,089	-18.27%

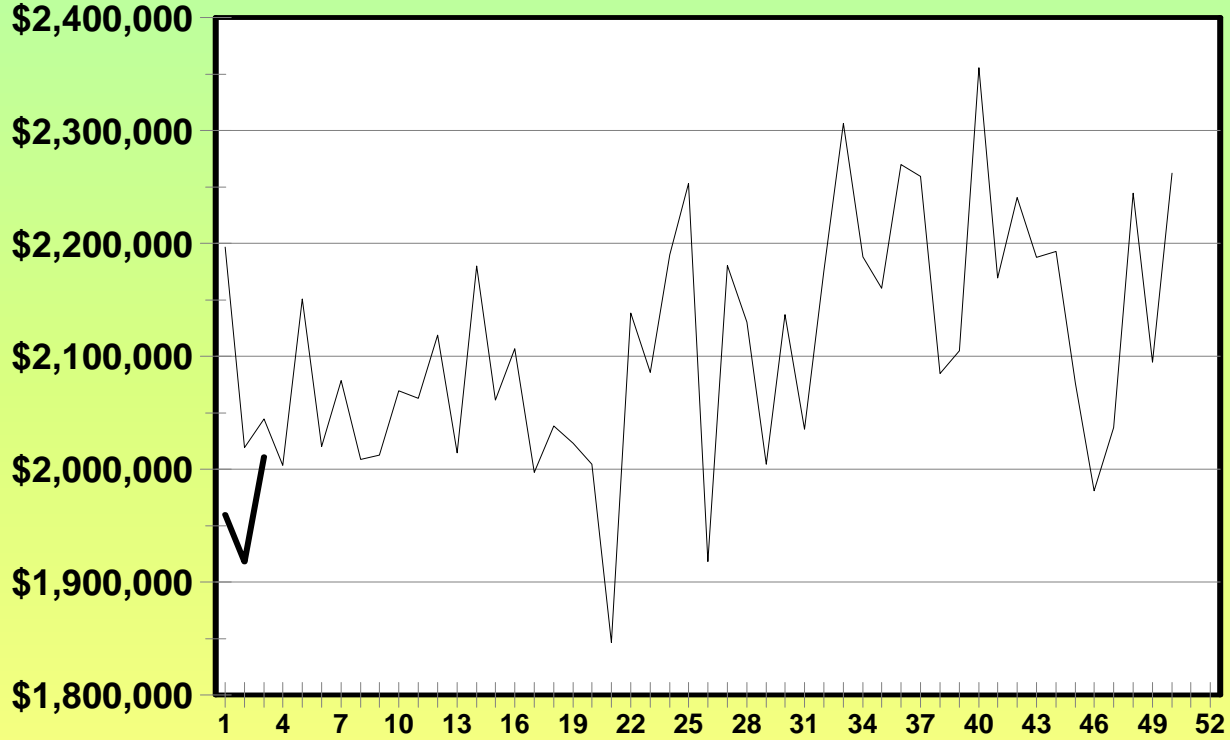
Week Ending: 07/19/08



Keno

BY_2009 -vs- BY_2008

(KN_Gross_Sales)



— BY_2008 — BY_2009

	This Year	Last Year	Difference	% Change
Last Week	\$1,917,703	\$2,019,000	-\$101,297	-5.02%
Current Week	\$2,011,134	\$2,044,662	-\$33,528	-1.64%
Year to Date	\$5,888,509	\$6,260,136	-\$371,627	-5.94%

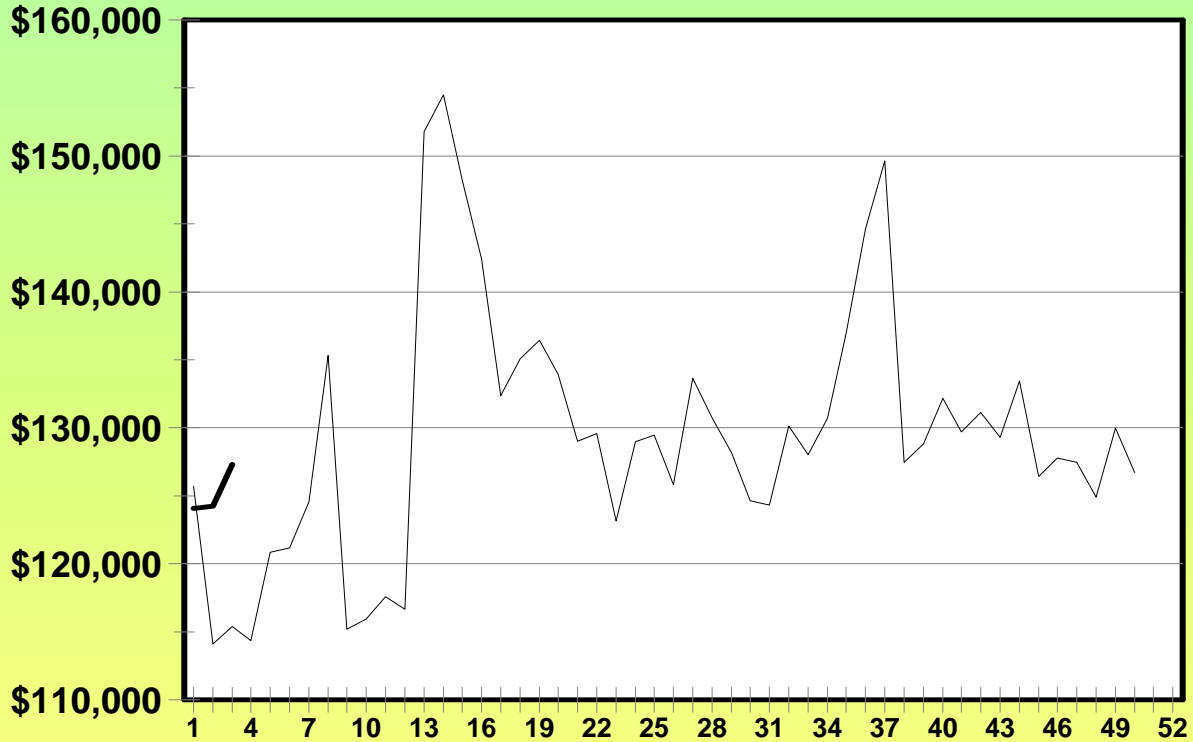
Week Ending: 07/19/08



Win for Life

BY_2009 -vs- BY_2008

(WL_Gross_Sales)



— BY_2008 — BY_2009

	This Year	Last Year	Difference	% Change
Last Week	\$124,220	\$114,092	\$10,128	8.88%
Current Week	\$127,292	\$115,398	\$11,894	10.31%
Year to Date	\$375,572	\$355,204	\$20,368	5.73%

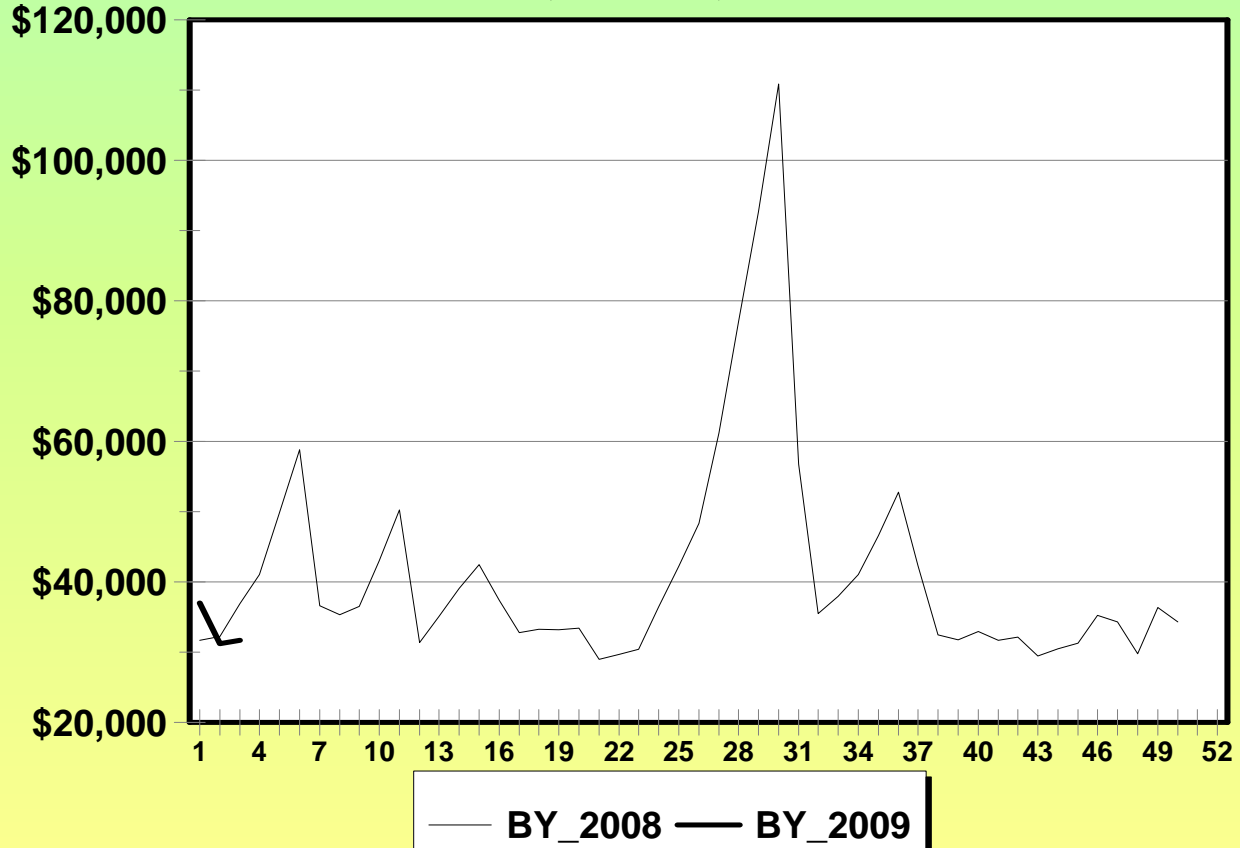
Week Ending: 07/19/08



Lucky Lines

BY_2009 -vs- BY_2008

(LL_Gross_Sales)



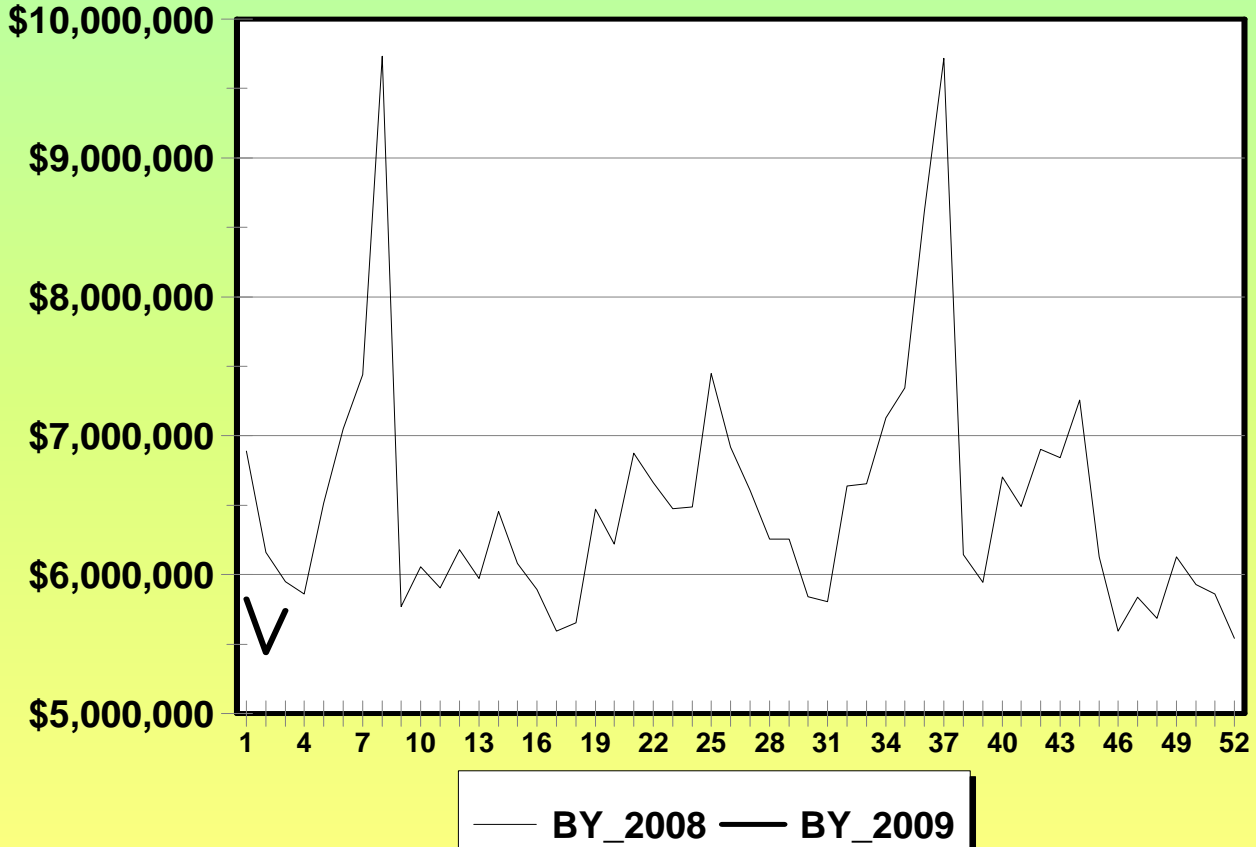
	This Year	Last Year	Difference	% Change
Last Week	\$31,190	\$32,184	-\$994	-3.09%
Current Week	\$31,660	\$36,896	-\$5,236	-14.19%
Year to Date	\$99,802	\$100,750	-\$948	-0.94%

Week Ending: 07/19/08



Traditional Only

BY_2009 -vs- BY_2008



	This Year	Last Year	Difference	% Change
Last Week	\$5,440,502	\$6,159,887	-\$719,385	-11.68%
Current Week	\$5,743,100	\$5,950,069	-\$206,969	-3.48%
Year to Date	\$17,007,297	\$19,000,178	-\$1,992,881	-10.49%

Note: Breakopen Gross Sales ~ LYTD: \$51,030

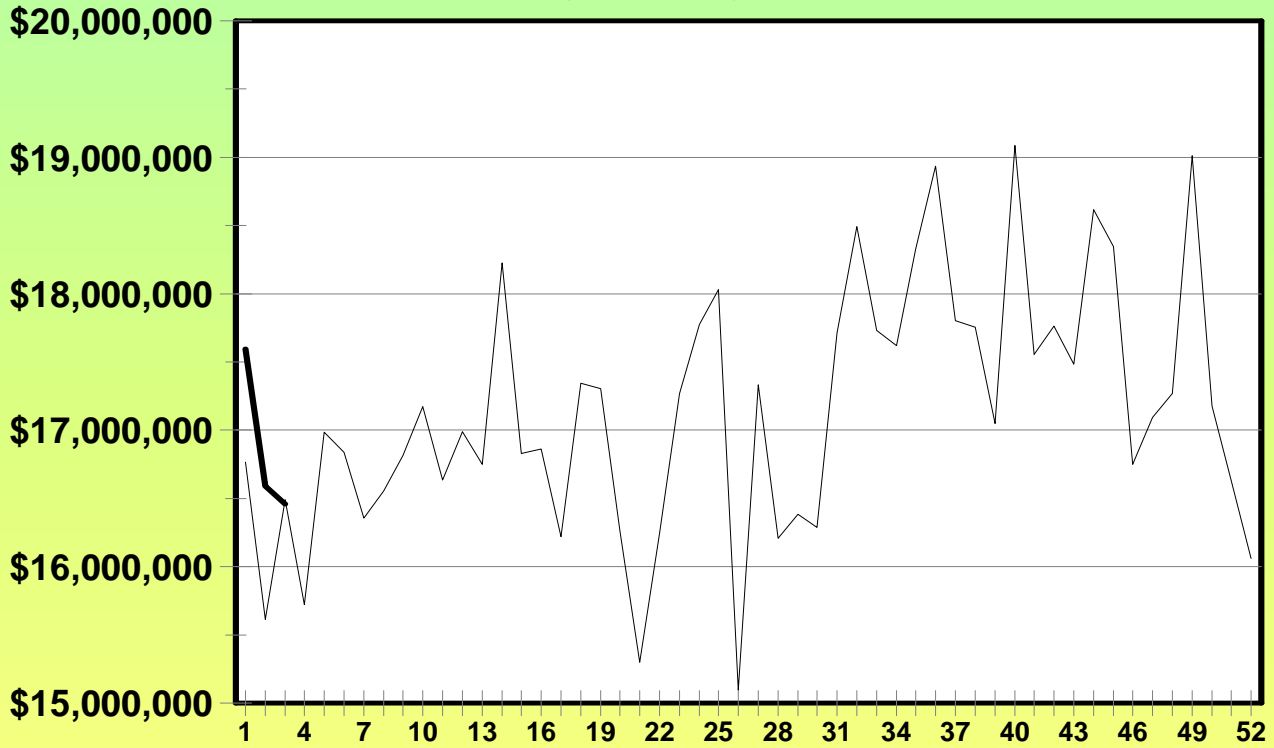
Week Ending: 07/19/08



Video

BY_2009 -vs- BY_2008

(VL_Gross_Sales)



— BY_2008 — BY_2009

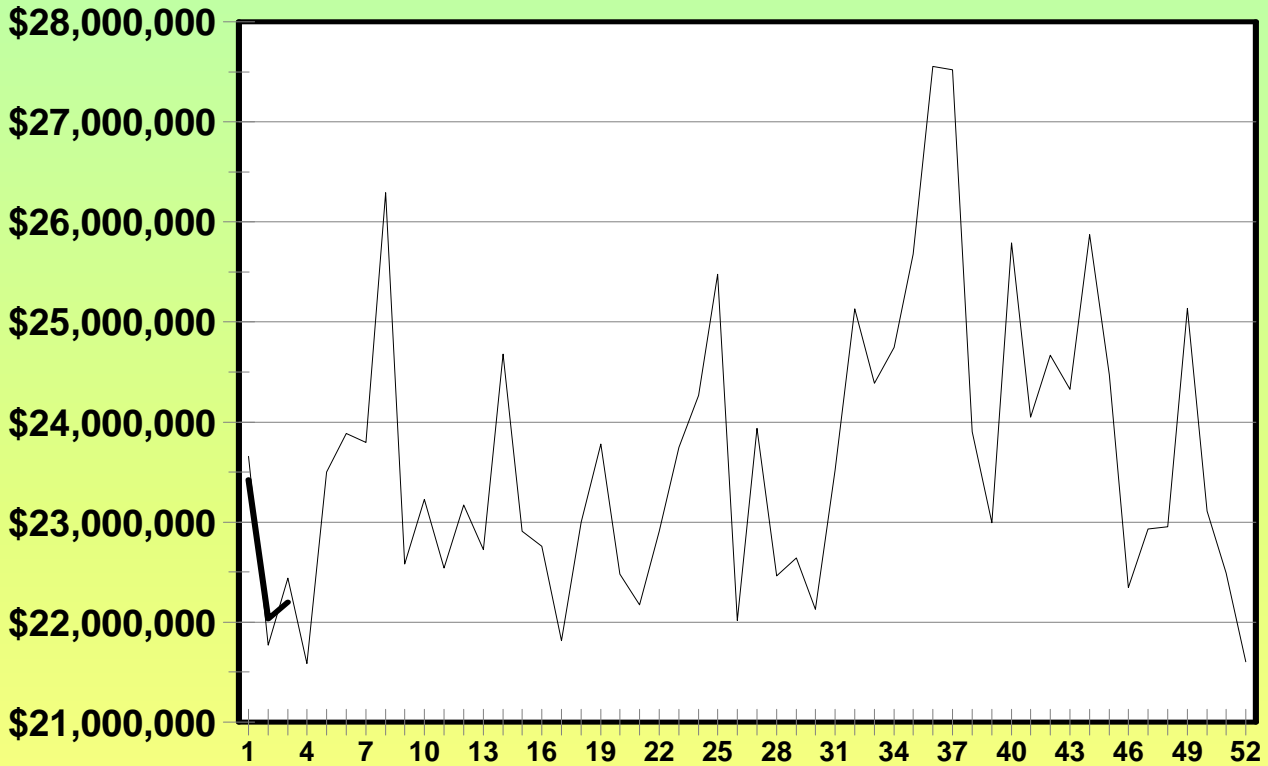
	This Year	Last Year	Difference	% Change
Last Week	\$16,592,239	\$15,612,053	\$980,186	6.28%
Current Week	\$16,457,766	\$16,491,554	-\$33,788	-0.20%
Year to Date	\$50,646,709	\$48,871,930	\$1,774,779	3.63%

Week Ending: 07/19/08



Total Lottery Sales

BY_2009 -vs- BY_2008



— BY_2008 — BY_2009

	This Year	Last Year*	Difference	% Change
Last Week	\$22,032,741	\$21,771,940	\$260,801	1.20%
Current Week	\$22,200,866	\$22,441,623	-\$240,757	-1.07%
Year to Date	\$67,654,006	\$67,872,108	-\$218,102	-0.32%

Note: Breakopen Gross Sales ~ LYTD: \$51,030