



# Business Year Comparisons

**BY ~ 2008 vs. BY ~ 2007**

*\* (52 Business Weeks)*

*\* (53 Business Weeks)*

**Week Ending: 03/15/08**

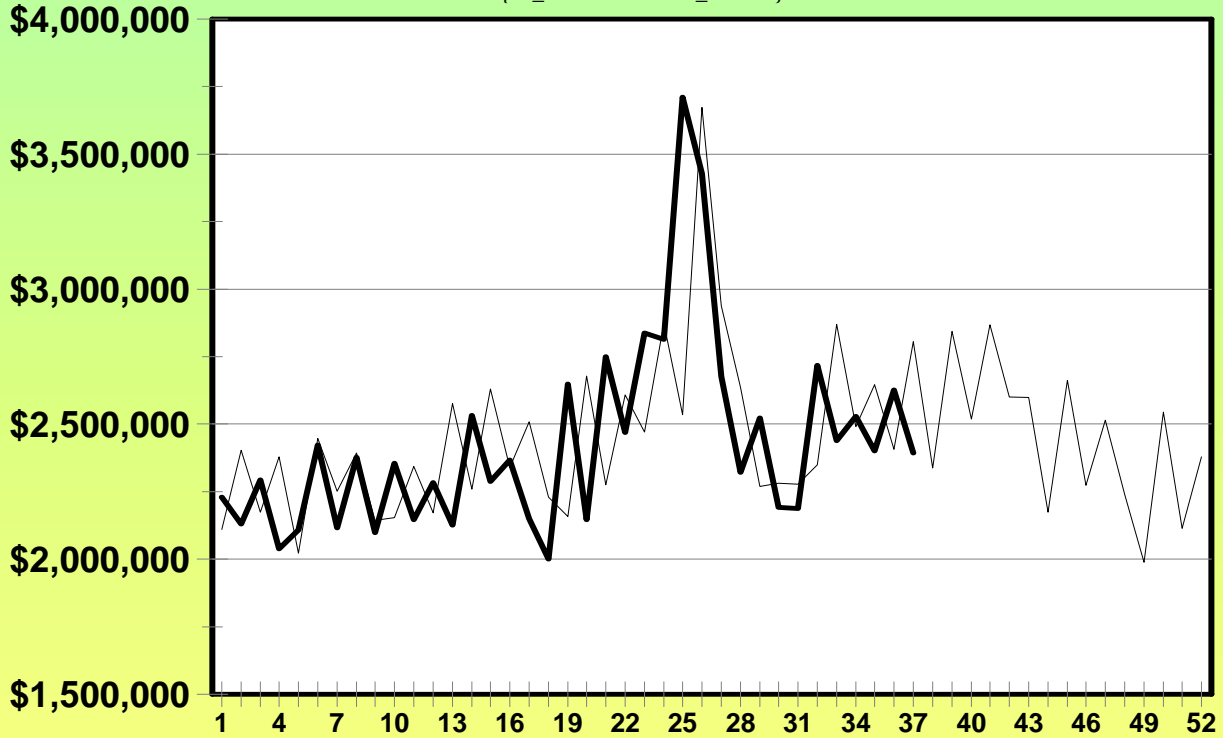
Week Ending: 03/15/08



# Scratch-its

## BY\_2008 -vs- BY\_2007

*SUM{SI\_activations + SI\_returns}*



— BY\_2007 — BY\_2008

	This Year	Last Year	Difference	% Change
Last Week	\$2,627,168	\$2,406,265	\$220,903	9.18%
Current Week	\$2,393,611	\$2,806,294	-\$412,683	-14.71%
Year to Date	\$89,866,781	\$90,781,471	-\$914,690	-1.01%

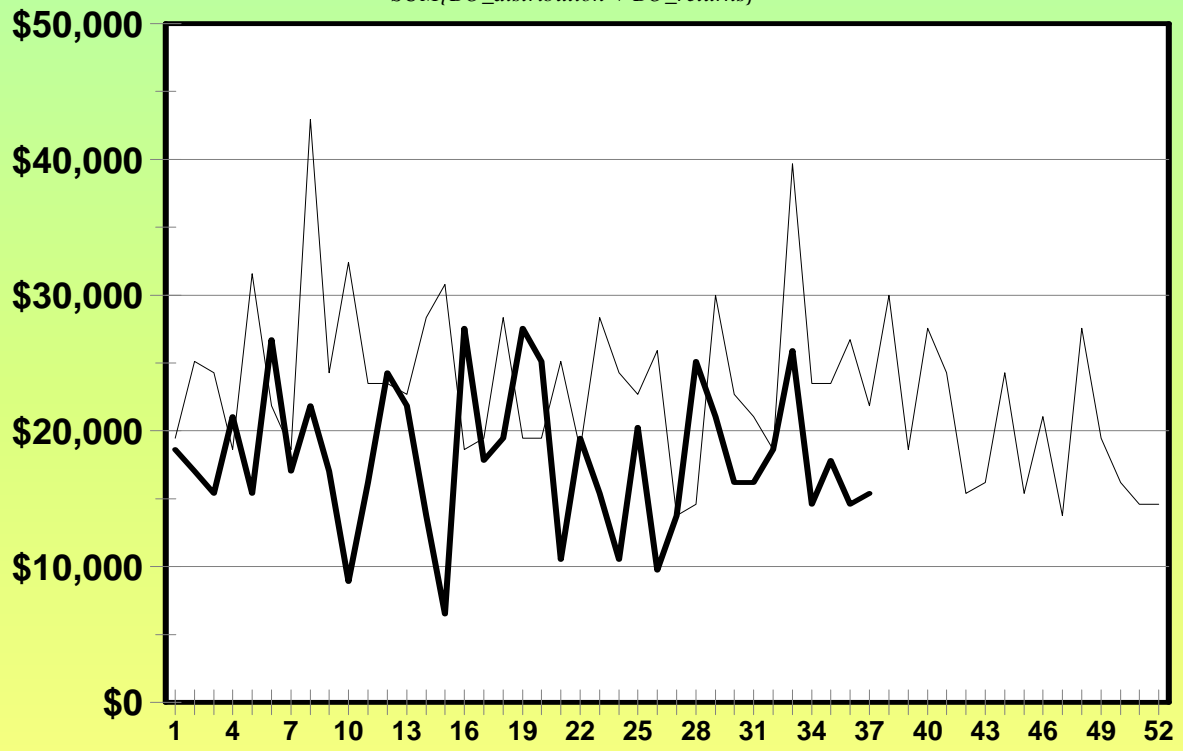
Week Ending: 03/15/08



# Breakopens

## BY\_2008 -vs- BY\_2007

*SUM{BO\_distribution + BO\_returns}*



— BY\_2007 — BY\_2008

	This Year	Last Year	Difference	% Change
Last Week	\$14,580	\$26,730	-\$12,150	-45.45%
Current Week	\$15,390	\$21,870	-\$6,480	-29.63%
Year to Date	\$664,200	\$894,240	-\$230,040	-25.72%

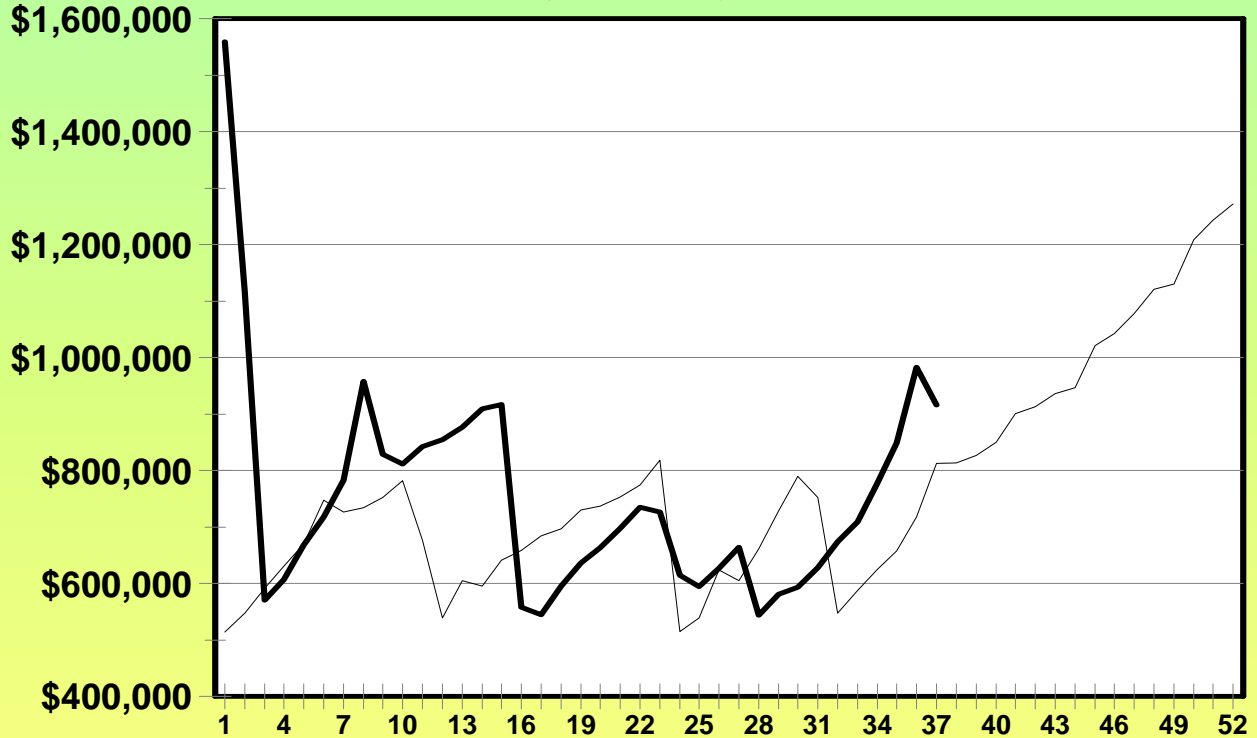
Week Ending: 03/15/08



# Megabucks

## BY\_2008 -vs- BY\_2007

(MB\_Gross\_Sales)



— BY\_2007 — BY\_2008

	This Year	Last Year	Difference	% Change
Last Week	\$982,340	\$717,841	\$264,499	36.85%
Current Week	\$915,824	\$812,244	\$103,580	12.75%
Year to Date	\$27,926,277	\$24,766,000	\$3,160,277	12.76%

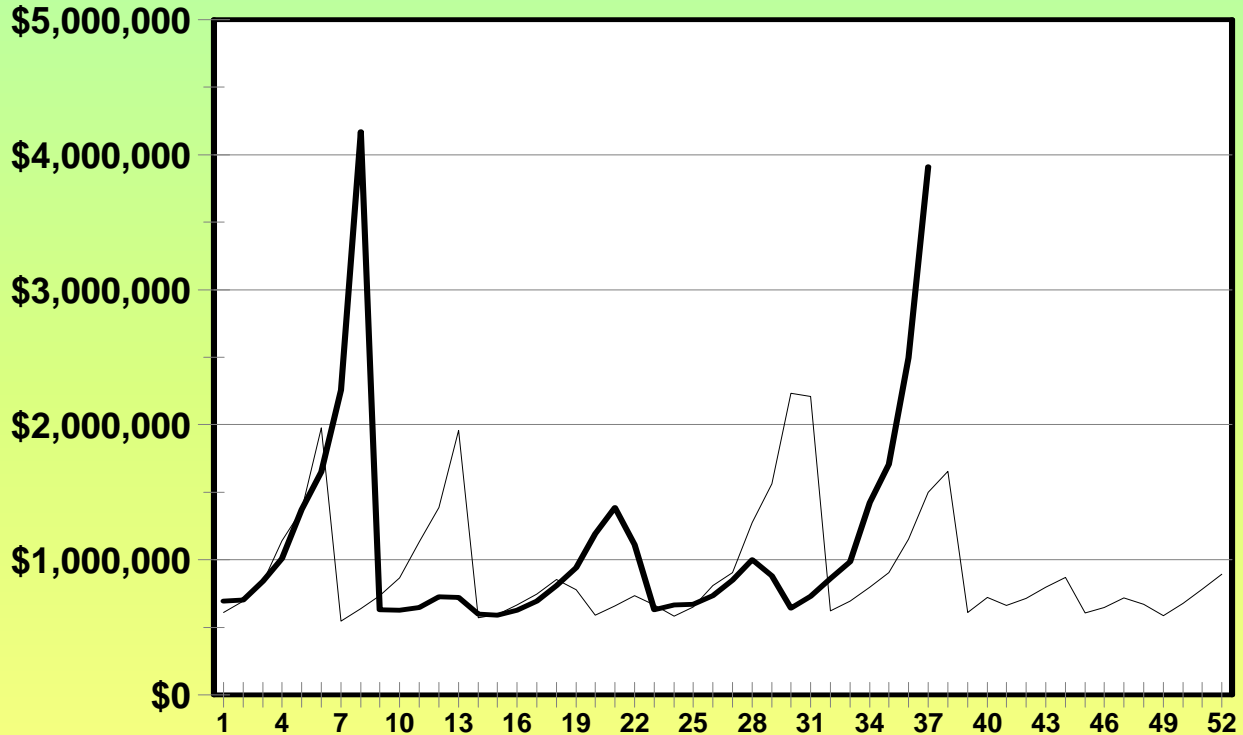
Week Ending: 03/15/08



# Powerball

## BY\_2008 -vs- BY\_2007

(PB\_Gross\_Sales)



— BY\_2007 — BY\_2008

	This Year	Last Year	Difference	% Change
Last Week	\$2,495,542	\$1,152,048	\$1,343,494	116.62%
Current Week	\$3,912,515	\$1,498,685	\$2,413,830	161.06%
Year to Date	\$42,185,257	\$36,640,507	\$5,544,750	15.13%

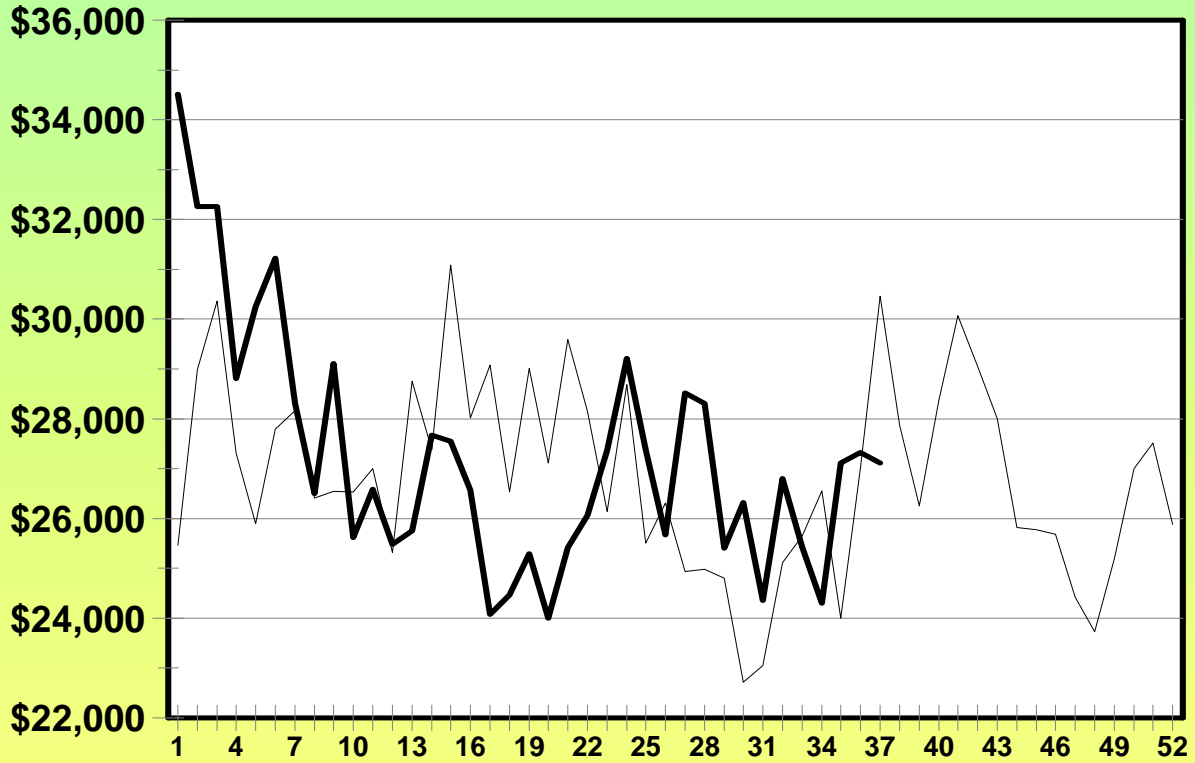
Week Ending: 03/15/08



# Pick 4

## BY\_2008 -vs- BY\_2007

(P4\_Gross\_Sales)



— BY\_2007 — BY\_2008

	This Year	Last Year	Difference	% Change
Last Week	\$27,330	\$27,012	\$318	1.18%
Current Week	\$27,115	\$30,461	-\$3,346	-10.98%
Year to Date	\$1,008,428	\$996,459	\$11,969	1.20%

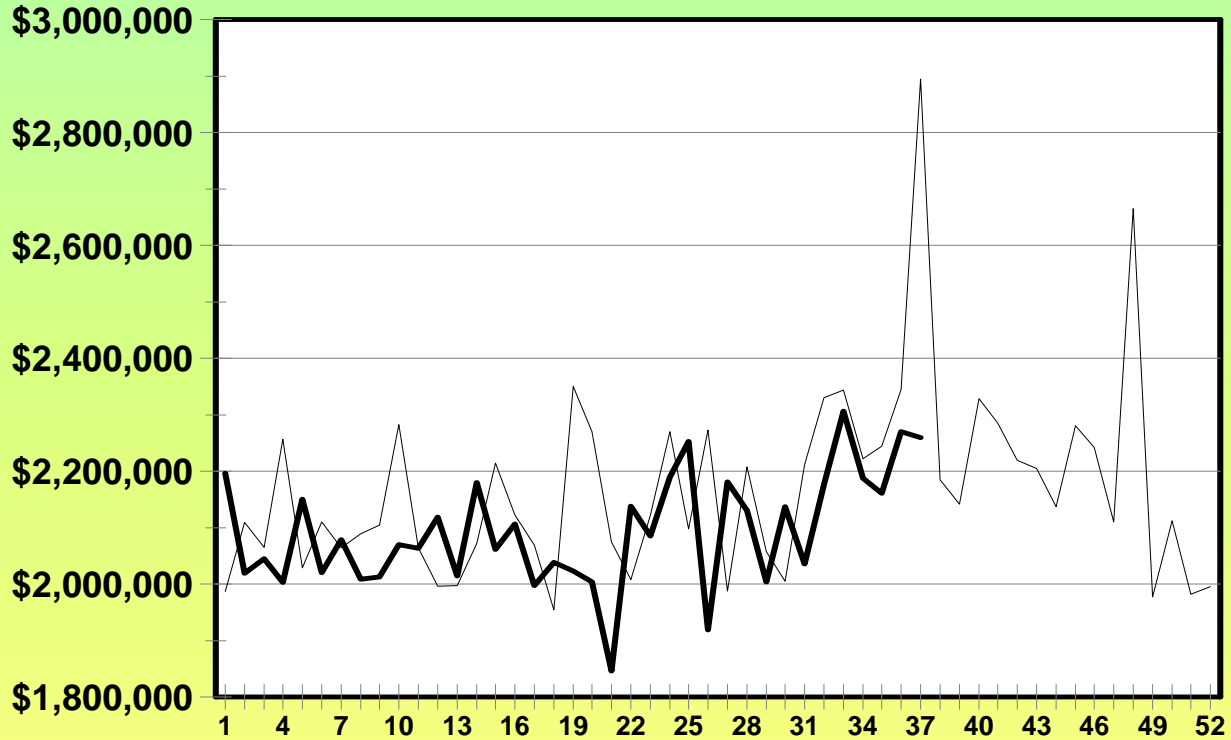
Week Ending: 03/15/08



# Keno

## BY\_2008 -vs- BY\_2007

*(KN\_Gross\_Sales)*



— BY\_2007 — BY\_2008

	This Year	Last Year	Difference	% Change
Last Week	\$2,270,012	\$2,344,084	-\$74,072	-3.16%
Current Week	\$2,259,252	\$2,894,939	-\$635,687	-21.96%
Year to Date	\$77,486,859	\$79,899,266	-\$2,412,407	-3.02%

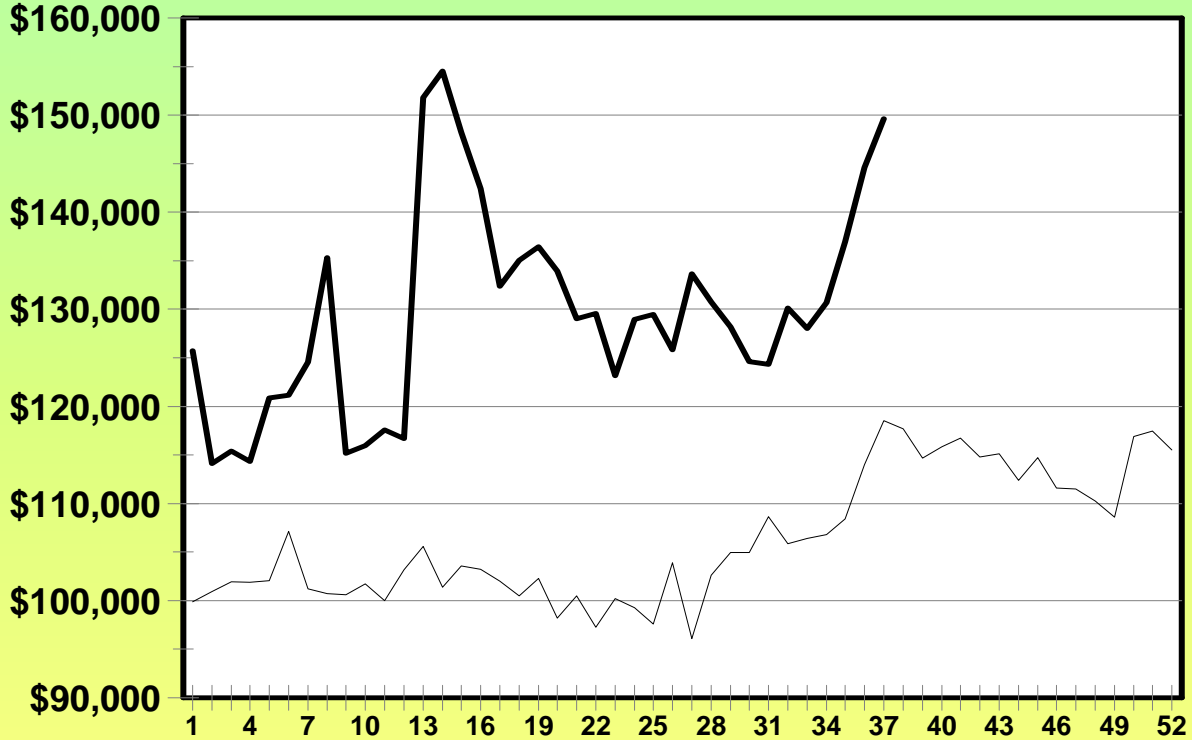
Week Ending: 03/15/08



# Win for Life

## BY\_2008 -vs- BY\_2007

(WL\_Gross\_Sales)



— BY\_2007 — BY\_2008

	This Year	Last Year	Difference	% Change
Last Week	\$144,594	\$114,024	\$30,570	26.81%
Current Week	\$149,614	\$118,506	\$31,108	26.25%
Year to Date	\$4,799,026	\$3,814,052	\$984,974	25.82%

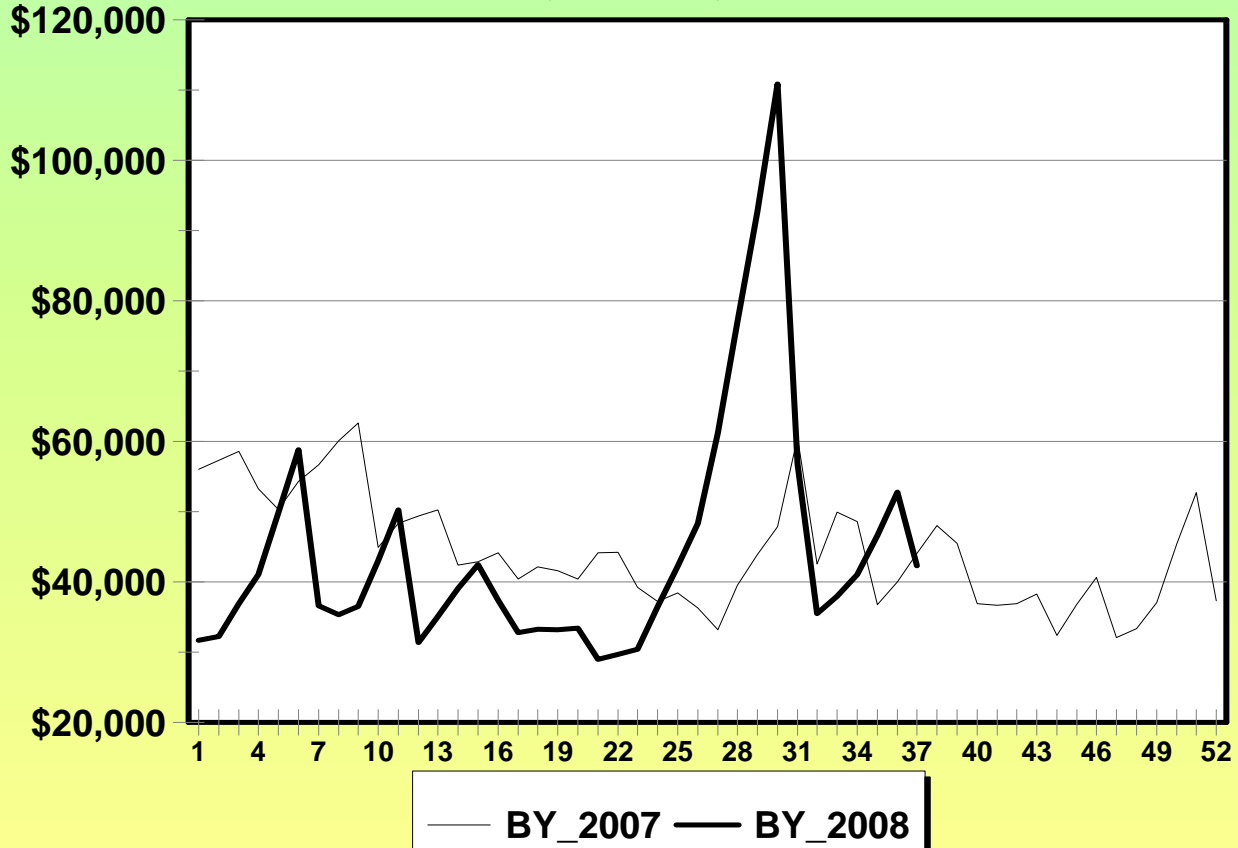
Week Ending: 03/15/08



# Lucky Lines

## BY\_2008 -vs- BY\_2007

(LL\_Gross\_Sales)



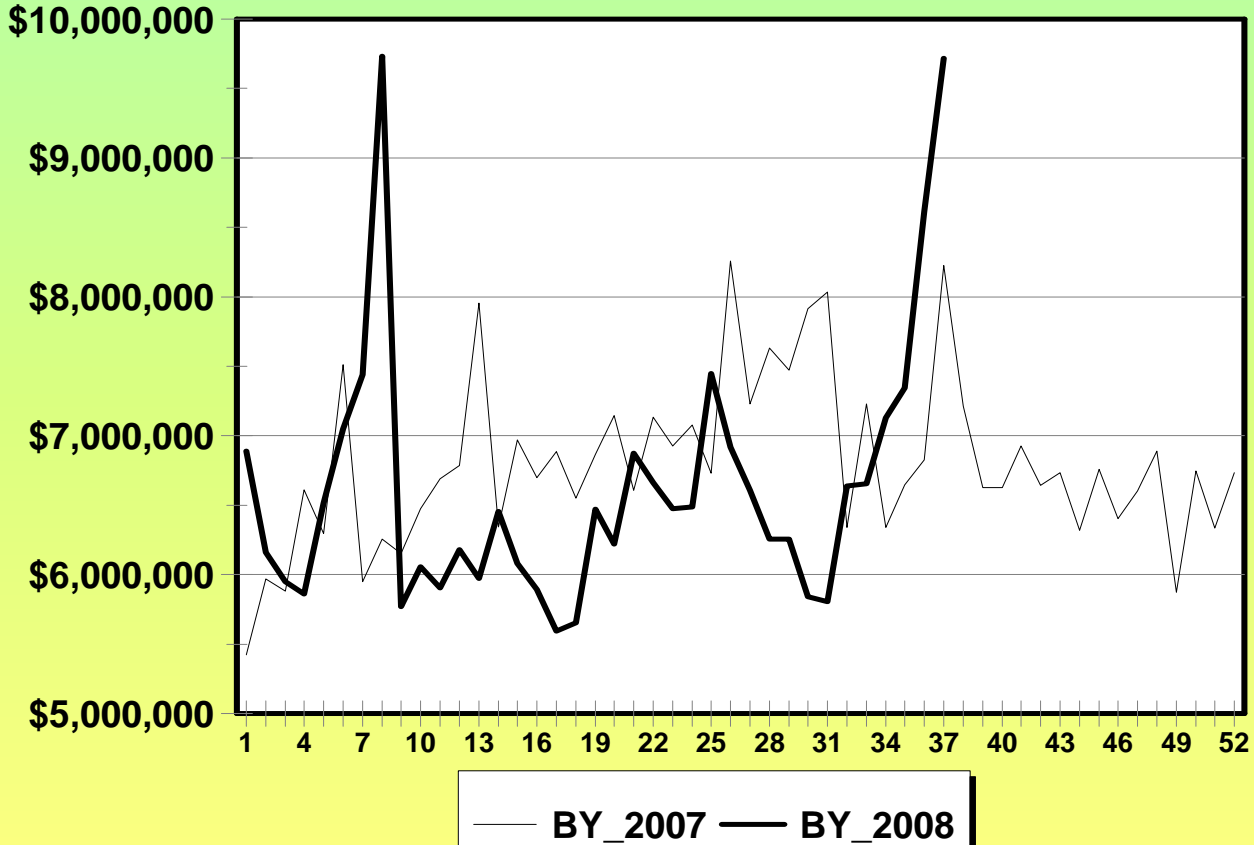
	This Year	Last Year	Difference	% Change
Last Week	\$52,790	\$40,038	\$12,752	31.85%
Current Week	\$42,336	\$44,050	-\$1,714	-3.89%
Year to Date	\$1,640,676	\$1,722,304	-\$81,628	-4.74%

Week Ending: 03/15/08



# Traditional Only

## BY\_2008 -vs- BY\_2007



	This Year	Last Year	Difference	% Change
Last Week	\$8,614,356	\$6,828,042	\$1,786,314	26.16%
Current Week	\$9,715,657	\$8,227,049	\$1,488,608	18.09%
Year to Date	\$245,577,504	\$254,037,480	-\$8,459,976	-3.33%

\*Sports Action & Scoreboard Gross Sales Last Year to Date:

Sports Action:	\$14,009,541	} Conclusion_LYTD_Sales
Scoreboard:	\$513,640	
<b>Total:</b>	<b>\$14,523,181</b>	

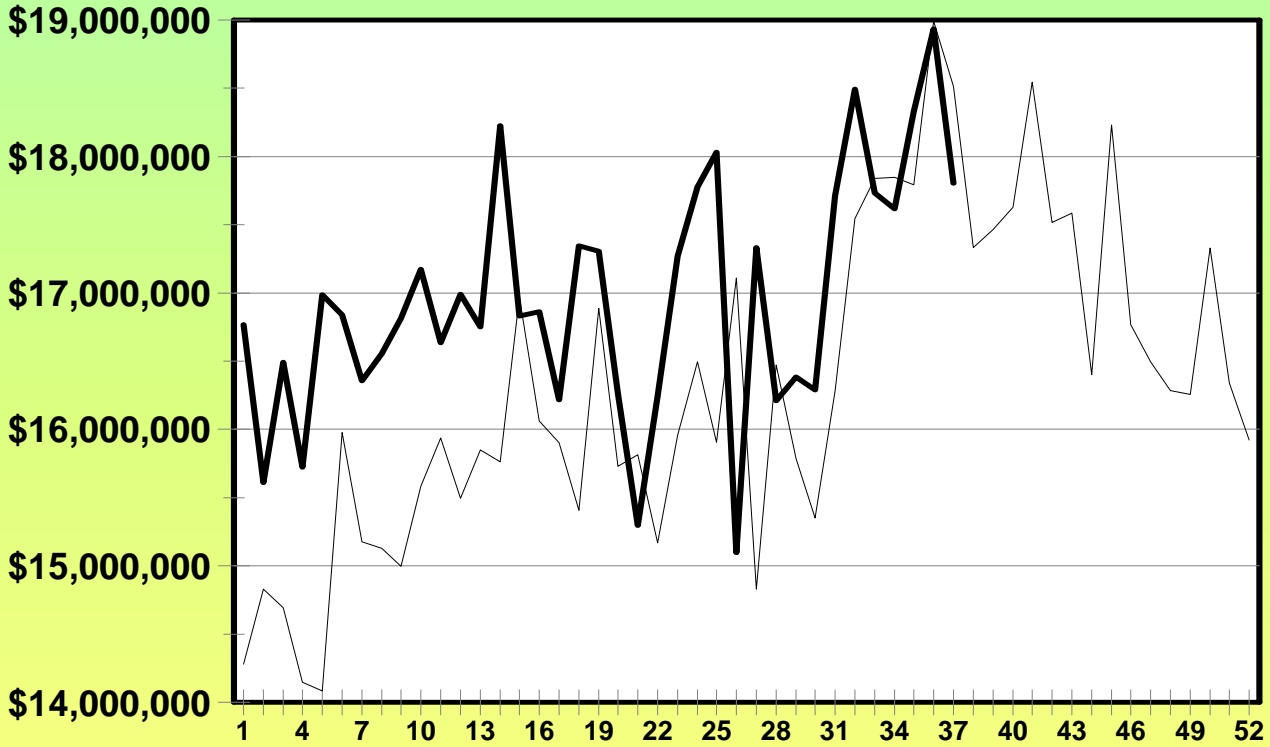
Week Ending: 03/15/08



# Video

## BY\_2008 -vs- BY\_2007

*(VL\_Gross\_Sales)*



— BY\_2007 — BY\_2008

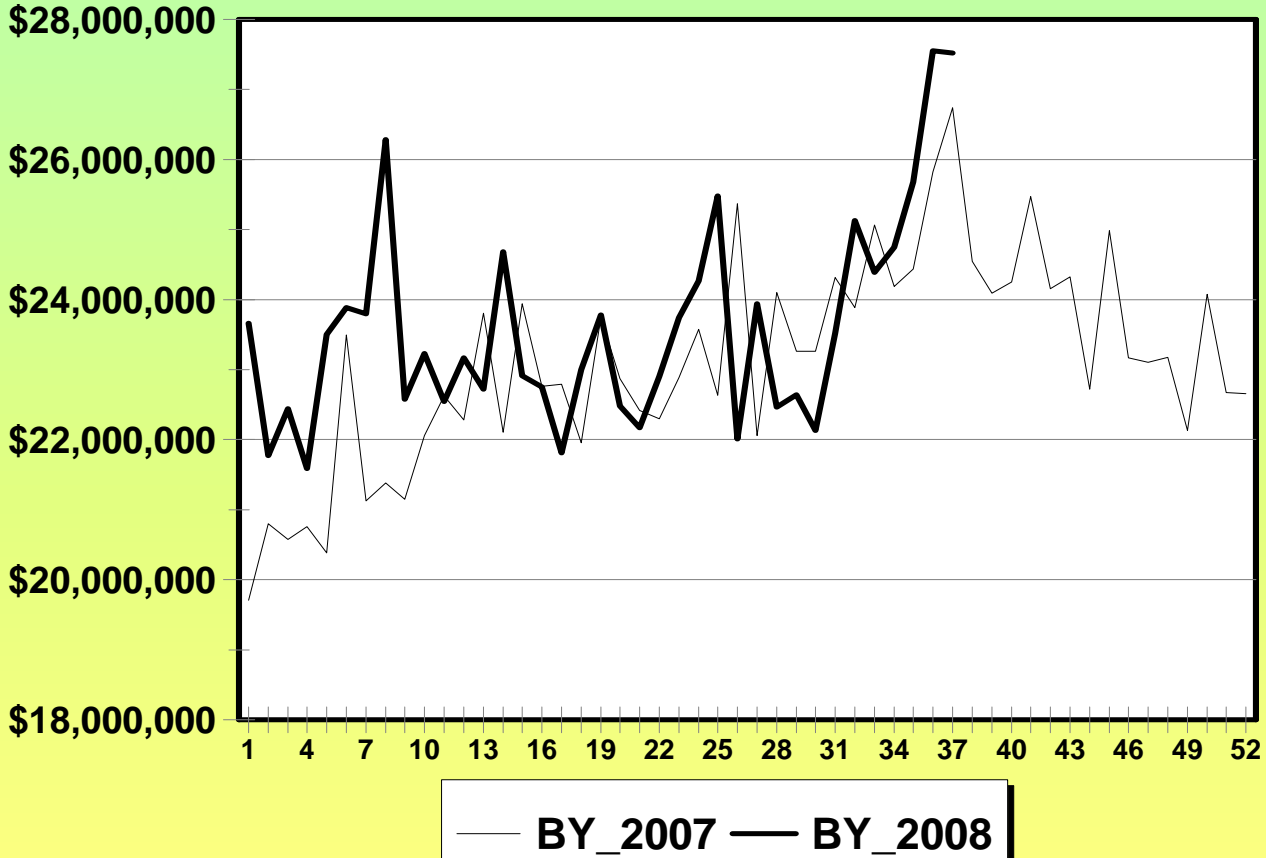
	This Year	Last Year	Difference	% Change
Last Week	\$18,936,706	\$18,994,011	-\$57,305	-0.30%
Current Week	\$17,803,603	\$18,515,011	-\$711,408	-3.84%
Year to Date	\$627,301,729	\$592,597,047	\$34,704,682	5.86%

Week Ending: 03/15/08



# Total Lottery Sales

## BY\_2008 -vs- BY\_2007



	This Year	Last Year*	Difference	% Change
Last Week	\$27,551,062	\$25,822,053	\$1,729,009	6.70%
Current Week	\$27,519,260	\$26,742,060	\$777,200	2.91%
Year to Date	\$872,879,233	\$846,634,527	\$26,244,706	3.10%

\*Sports Action & Scoreboard Gross Sales Last Year to Date:

Sports Action:	\$14,009,541	} Conclusion_LYTD_Sales
Scoreboard:	\$513,640	
<b>Total:</b>	<b>\$14,523,181</b>	