



Business Year Comparisons

BY ~ 2008 vs. BY ~ 2007

** (52 Business Weeks)*

** (53 Business Weeks)*

Week Ending: 10/27/07

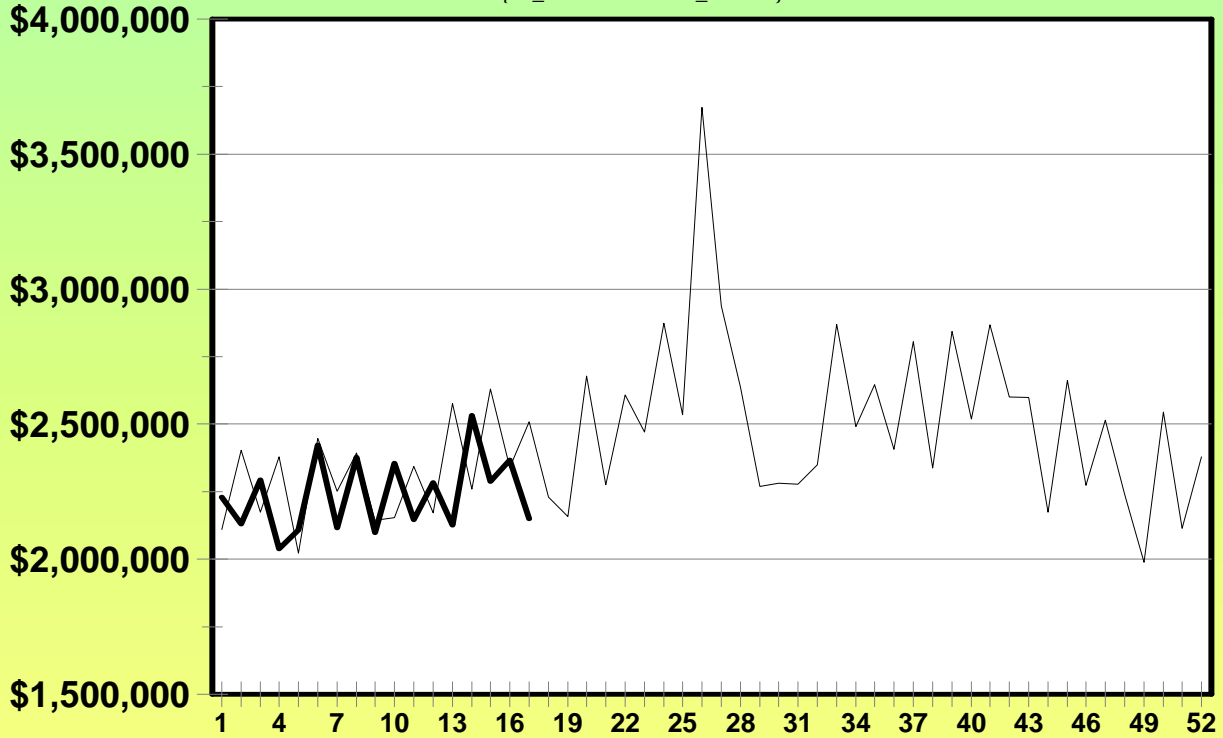
Week Ending: 10/27/07



Scratch-its

BY_2008 -vs- BY_2007

SUM{SI_activations + SI_returns}



— BY_2007 — BY_2008

	This Year	Last Year	Difference	% Change
Last Week	\$2,368,175	\$2,339,284	\$28,891	1.24%
Current Week	\$2,149,575	\$2,509,000	-\$359,425	-14.33%
Year to Date	\$38,061,142	\$39,307,736	-\$1,246,594	-3.17%

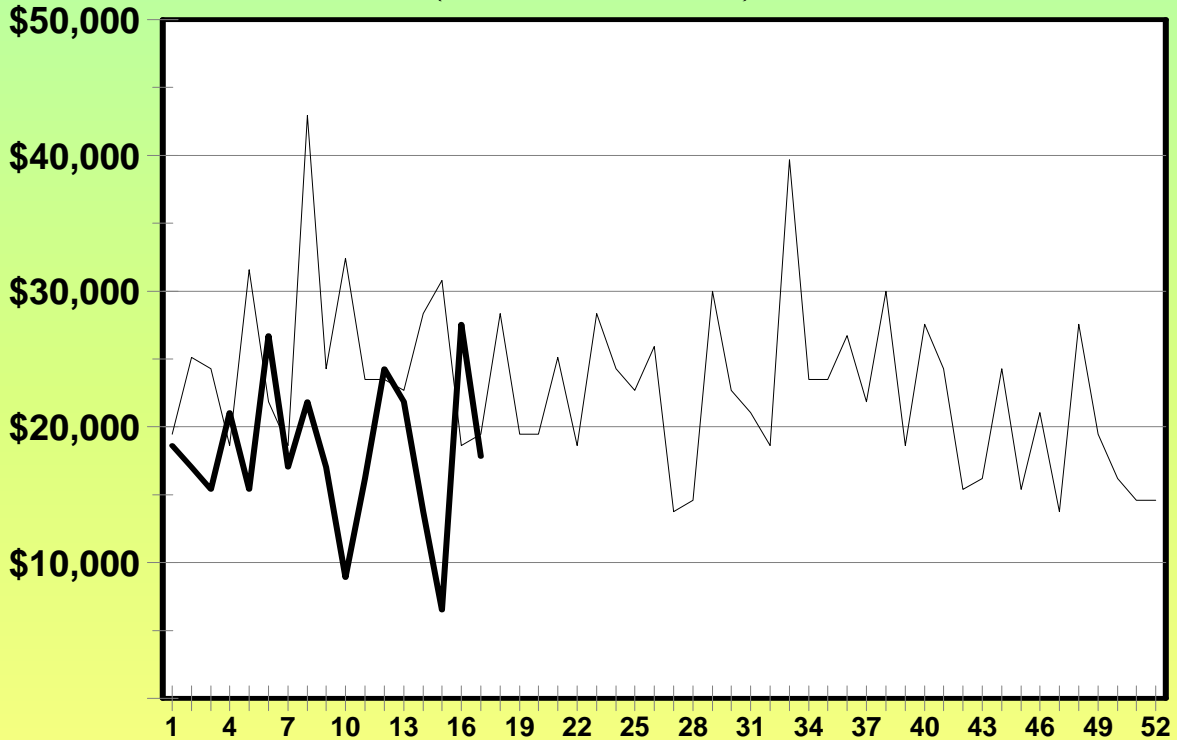
Week Ending: 10/27/07



Breakopens

BY_2008 -vs- BY_2007

SUM{BO_distribution + BO_returns}



— BY_2007 — BY_2008

	This Year	Last Year	Difference	% Change
Last Week	\$27,540	\$18,630	\$8,910	47.83%
Current Week	\$17,820	\$19,440	-\$1,620	-8.33%
Year to Date	\$306,990	\$426,060	-\$119,070	-27.95%

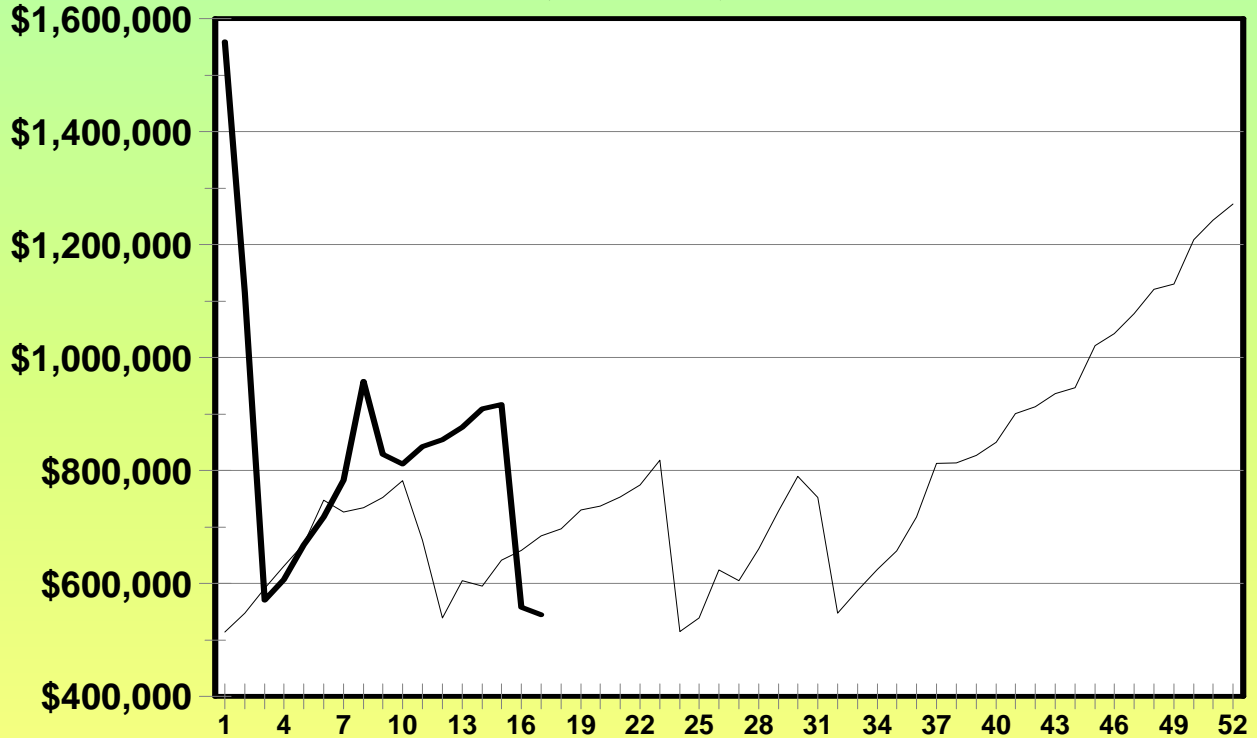
Week Ending: 10/27/07



Megabucks

BY_2008 -vs- BY_2007

(MB_Gross_Sales)



— BY_2007 — BY_2008

	This Year	Last Year	Difference	% Change
Last Week	\$557,843	\$658,334	-\$100,491	-15.26%
Current Week	\$544,459	\$684,083	-\$139,624	-20.41%
Year to Date	\$14,118,672	\$11,095,284	\$3,023,388	27.25%

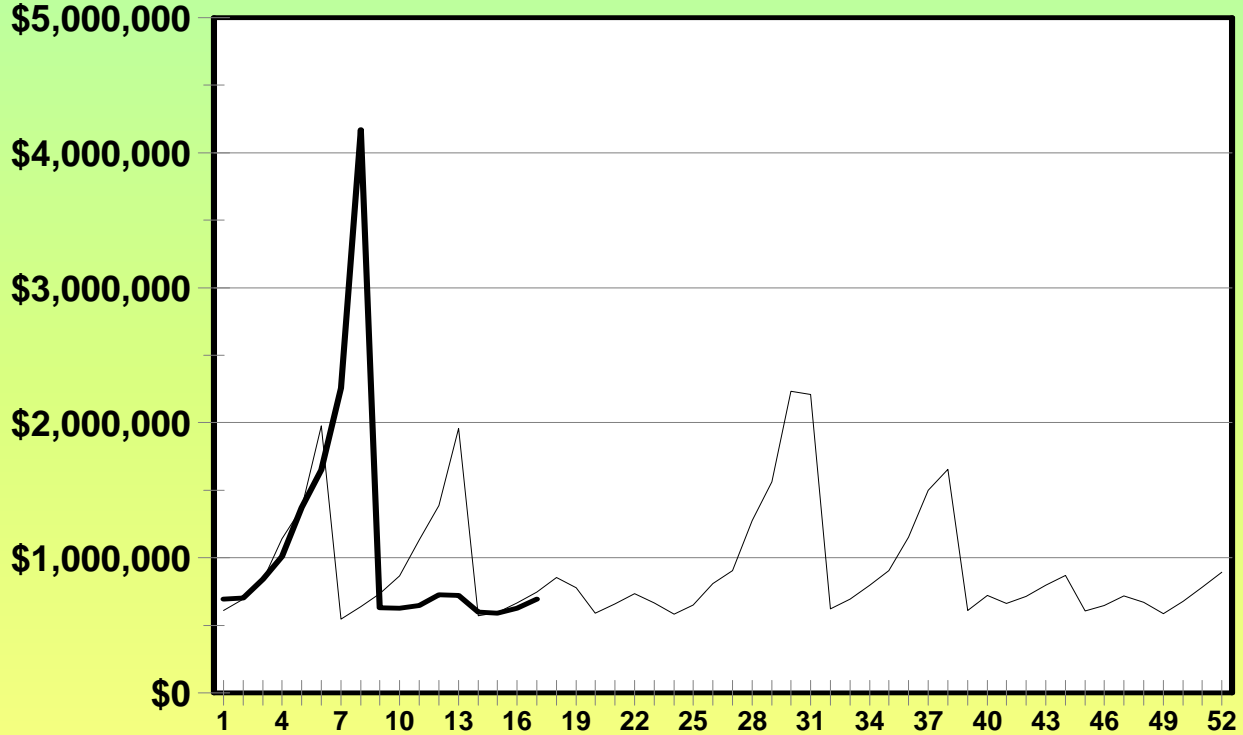
Week Ending: 10/27/07



Powerball

BY_2008 -vs- BY_2007

(PB_Gross_Sales)



— BY_2007 — BY_2008

	This Year	Last Year	Difference	% Change
Last Week	\$627,850	\$664,158	-\$36,308	-5.47%
Current Week	\$695,365	\$745,495	-\$50,130	-6.72%
Year to Date	\$18,557,331	\$16,461,662	\$2,095,669	12.73%

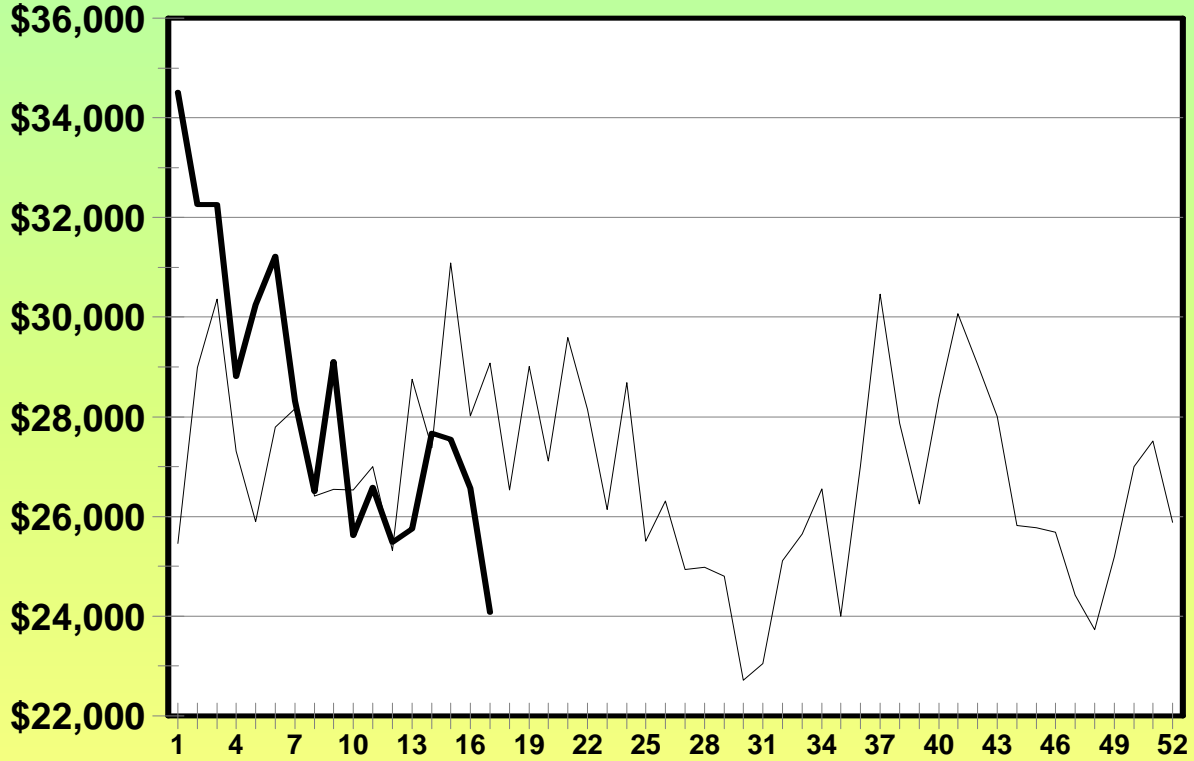
Week Ending: 10/27/07



Pick 4

BY_2008 -vs- BY_2007

(P4_Gross_Sales)



— BY_2007 — BY_2008

	This Year	Last Year	Difference	% Change
Last Week	\$26,561	\$28,016	-\$1,455	-5.19%
Current Week	\$24,079	\$29,082	-\$5,003	-17.20%
Year to Date	\$482,544	\$470,121	\$12,423	2.64%

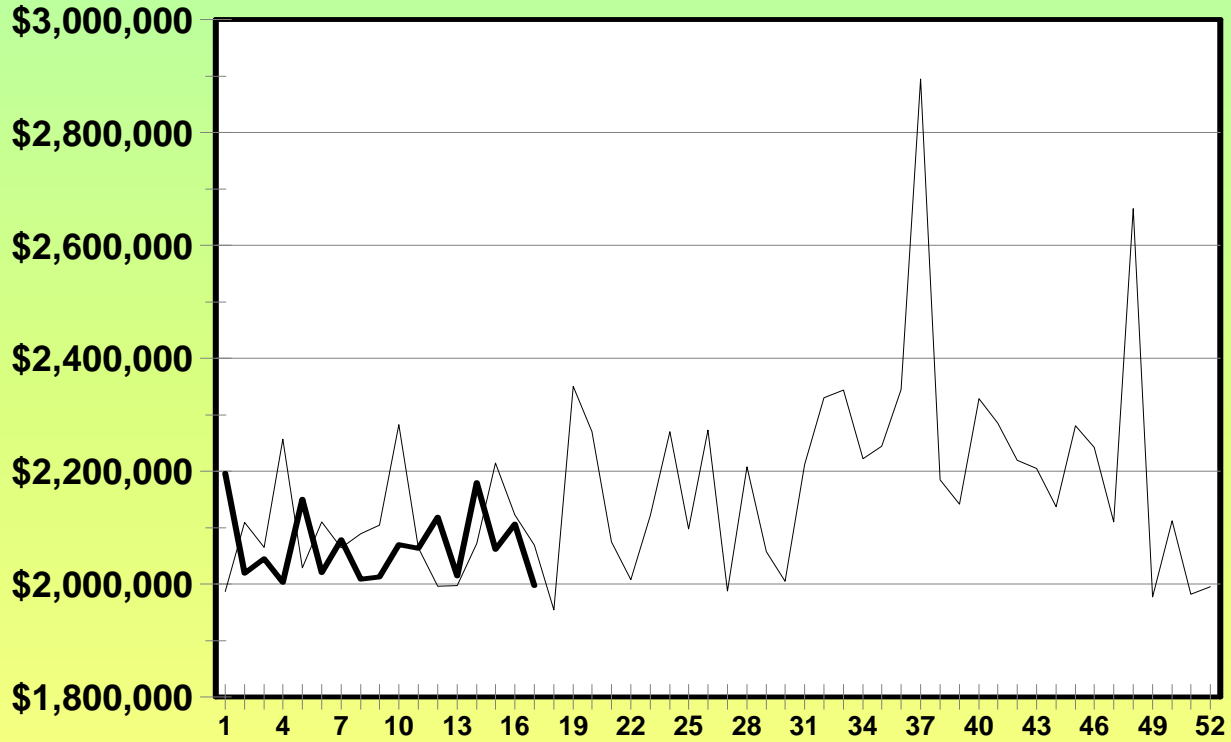
Week Ending: 10/27/07



Keno

BY_2008 -vs- BY_2007

(KN_Gross_Sales)



— BY_2007 — BY_2008

	This Year	Last Year	Difference	% Change
Last Week	\$2,106,524	\$2,122,667	-\$16,143	-0.76%
Current Week	\$1,997,069	\$2,068,817	-\$71,748	-3.47%
Year to Date	\$35,143,593	\$35,632,025	-\$488,432	-1.37%

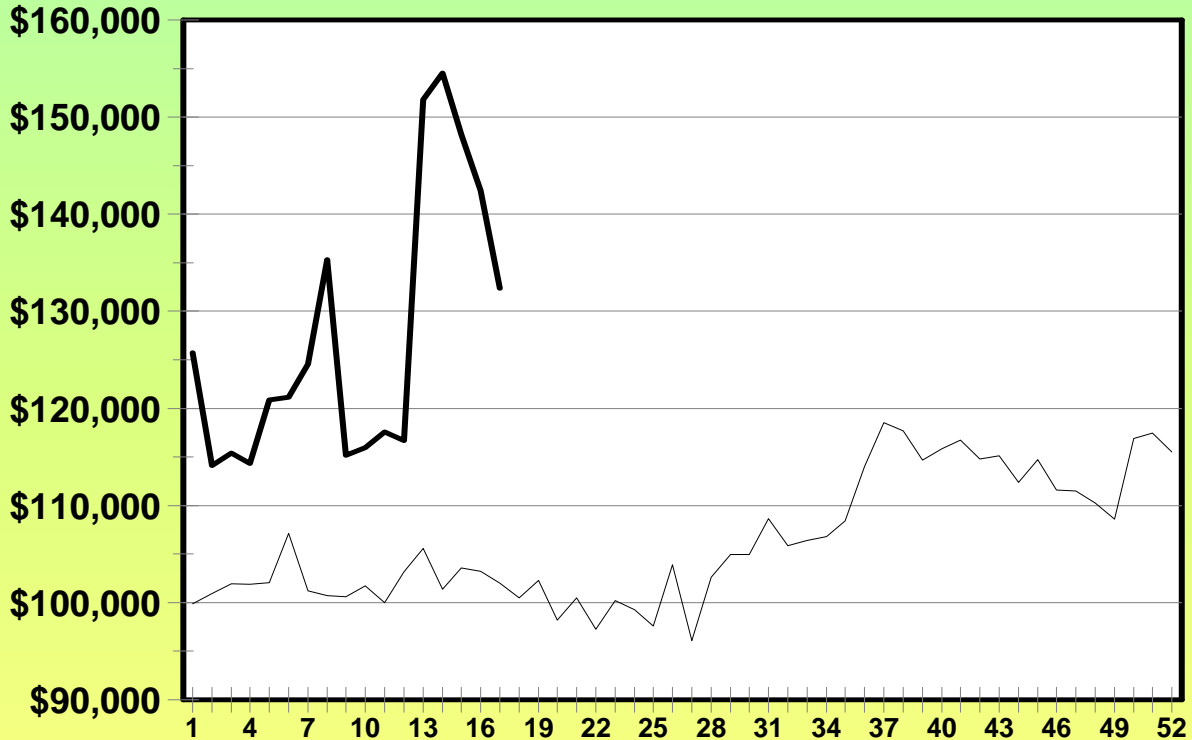
Week Ending: 10/27/07



Win for Life

BY_2008 -vs- BY_2007

(WL_Gross_Sales)



— BY_2007 — BY_2008

	This Year	Last Year	Difference	% Change
Last Week	\$142,424	\$103,240	\$39,184	37.95%
Current Week	\$132,356	\$102,010	\$30,346	29.75%
Year to Date	\$2,166,124	\$1,737,172	\$428,952	24.69%

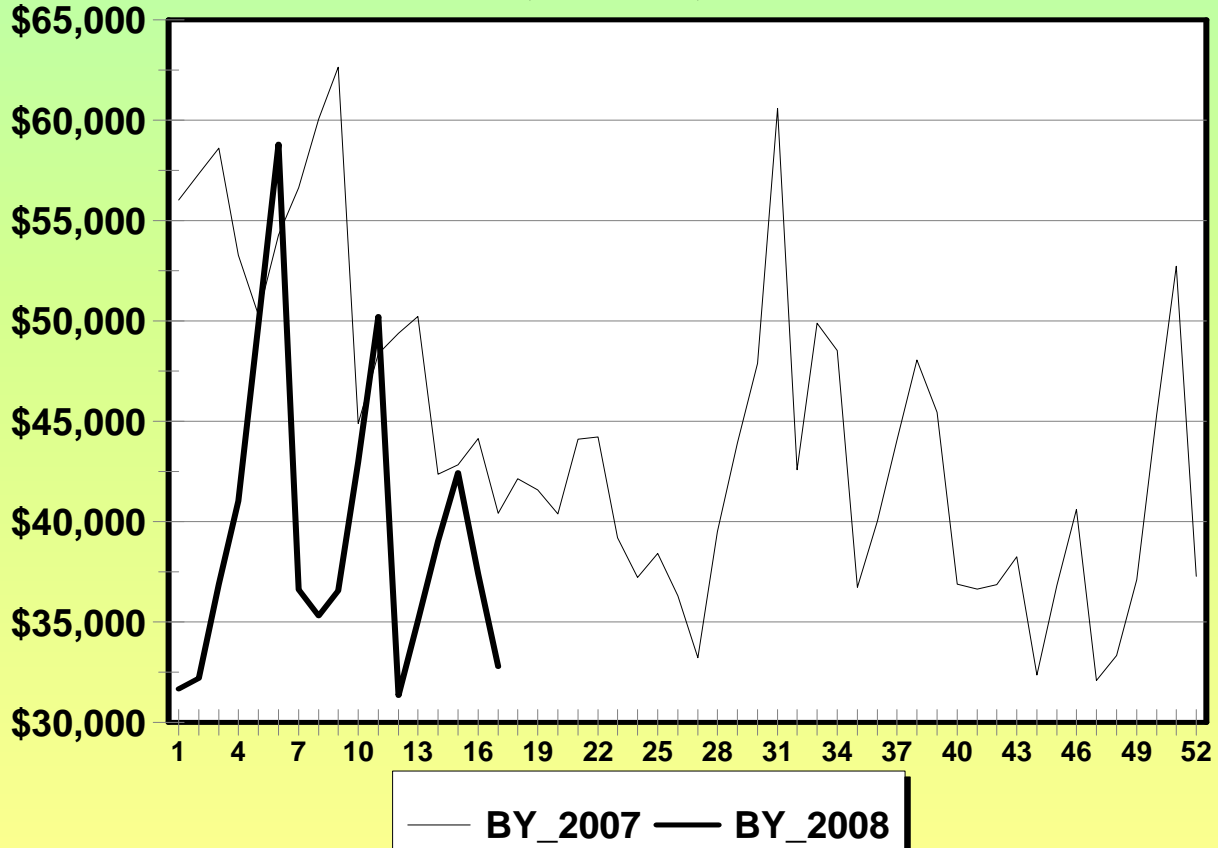
Week Ending: 10/27/07



Lucky Lines

BY_2008 -vs- BY_2007

(LL_Gross_Sales)



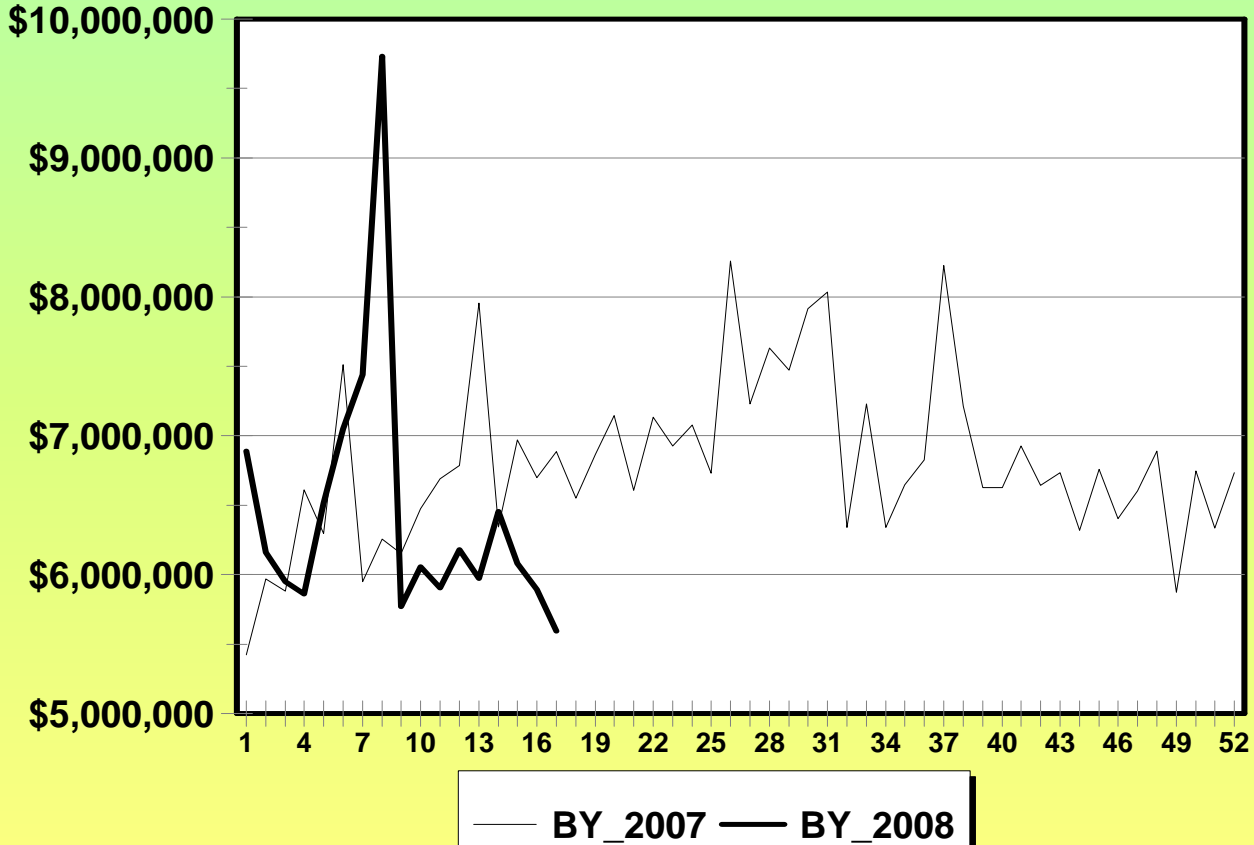
	This Year	Last Year	Difference	% Change
Last Week	\$37,392	\$44,144	-\$6,752	-15.30%
Current Week	\$32,770	\$40,406	-\$7,636	-18.90%
Year to Date	\$670,070	\$871,786	-\$201,716	-23.14%

Week Ending: 10/27/07



Traditional Only

BY_2008 -vs- BY_2007



	This Year	Last Year	Difference	% Change
Last Week	\$5,894,309	\$6,697,035	-\$802,726	-11.99%
Current Week	\$5,593,493	\$6,887,312	-\$1,293,819	-18.79%
Year to Date	\$109,506,466	\$110,850,529	-\$1,344,063	-1.21%

*Sports Action & Scoreboard Gross Sales Last Year to Date:

Sports Action:	\$4,701,135
Scoreboard:	\$147,548
Total:	\$4,848,683

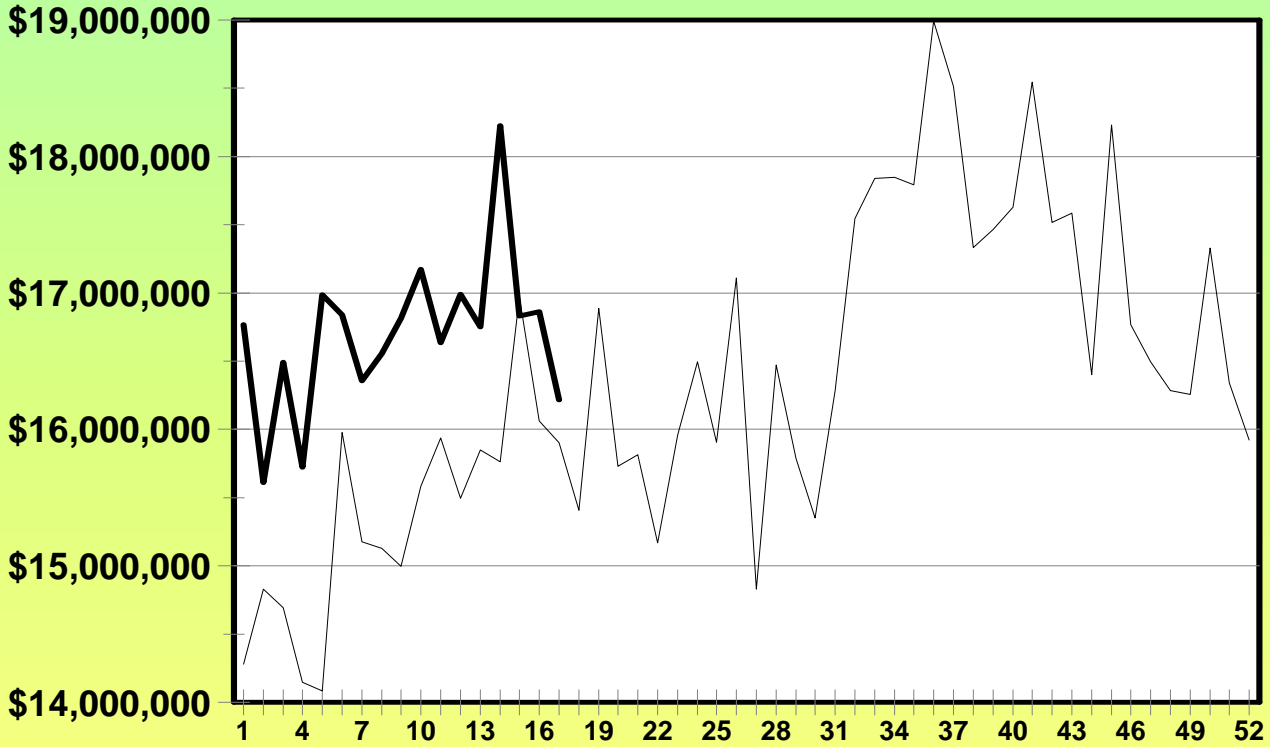
Week Ending: 10/27/07



Video

BY_2008 -vs- BY_2007

(VL_Gross_Sales)



— BY_2007 — BY_2008

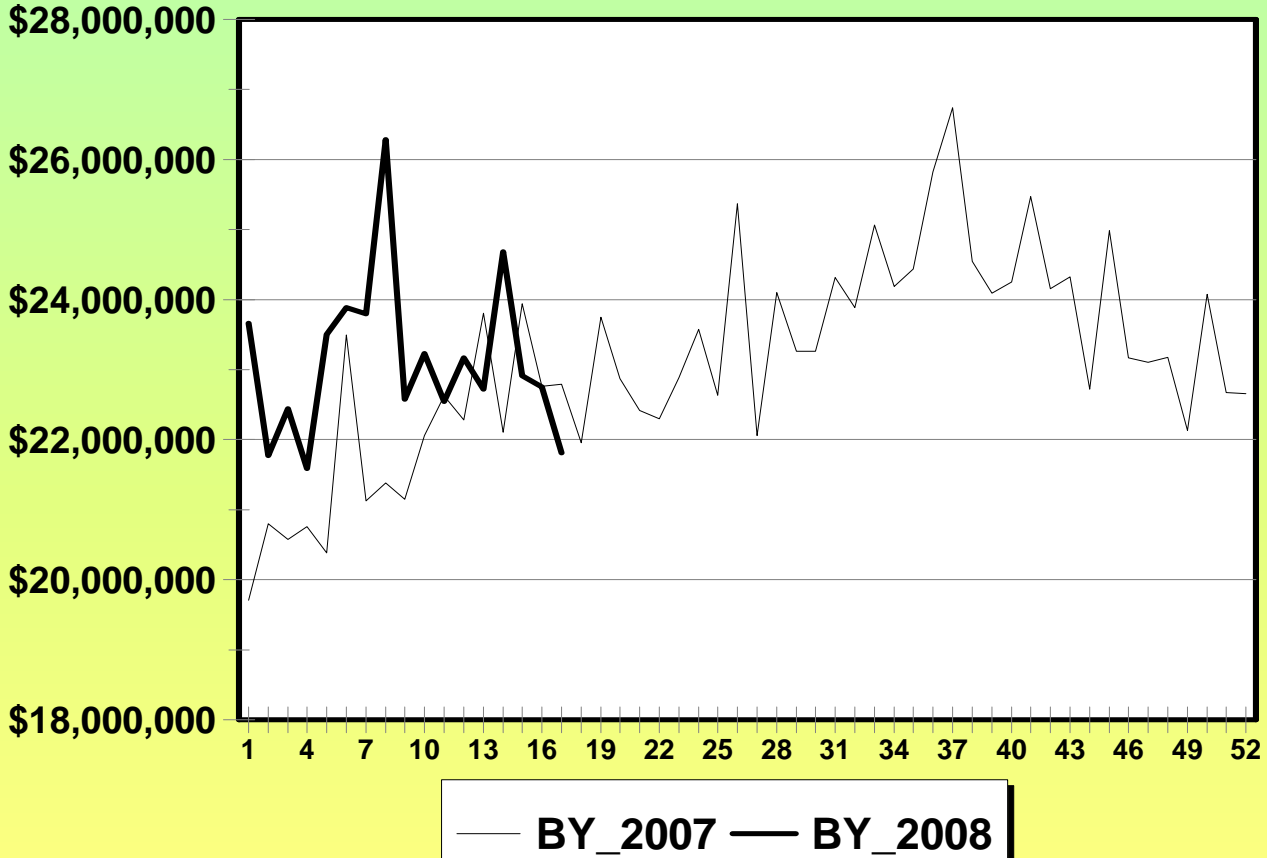
	This Year	Last Year	Difference	% Change
Last Week	\$16,862,037	\$16,061,263	\$800,774	4.99%
Current Week	\$16,218,813	\$15,902,637	\$316,176	1.99%
Year to Date	\$283,832,873	\$260,871,431	\$22,961,442	8.80%

Week Ending: 10/27/07



Total Lottery Sales

BY_2008 -vs- BY_2007



	This Year	Last Year*	Difference	% Change
Last Week	\$22,756,346	\$22,758,298	-\$1,952	-0.01%
Current Week	\$21,812,306	\$22,789,949	-\$977,643	-4.29%
Year to Date	\$393,339,339	\$371,721,960	\$21,617,379	5.82%

*Sports Action & Scoreboard Gross Sales Last Year to Date:

Sports Action:	\$4,701,135
Scoreboard:	\$147,548
Total:	\$4,848,683