



# Business Year Comparisons

**BY ~ 2008 vs. BY ~ 2007**

*\* (52 Business Weeks)*

*\* (53 Business Weeks)*

**Week Ending: 09/22/07**

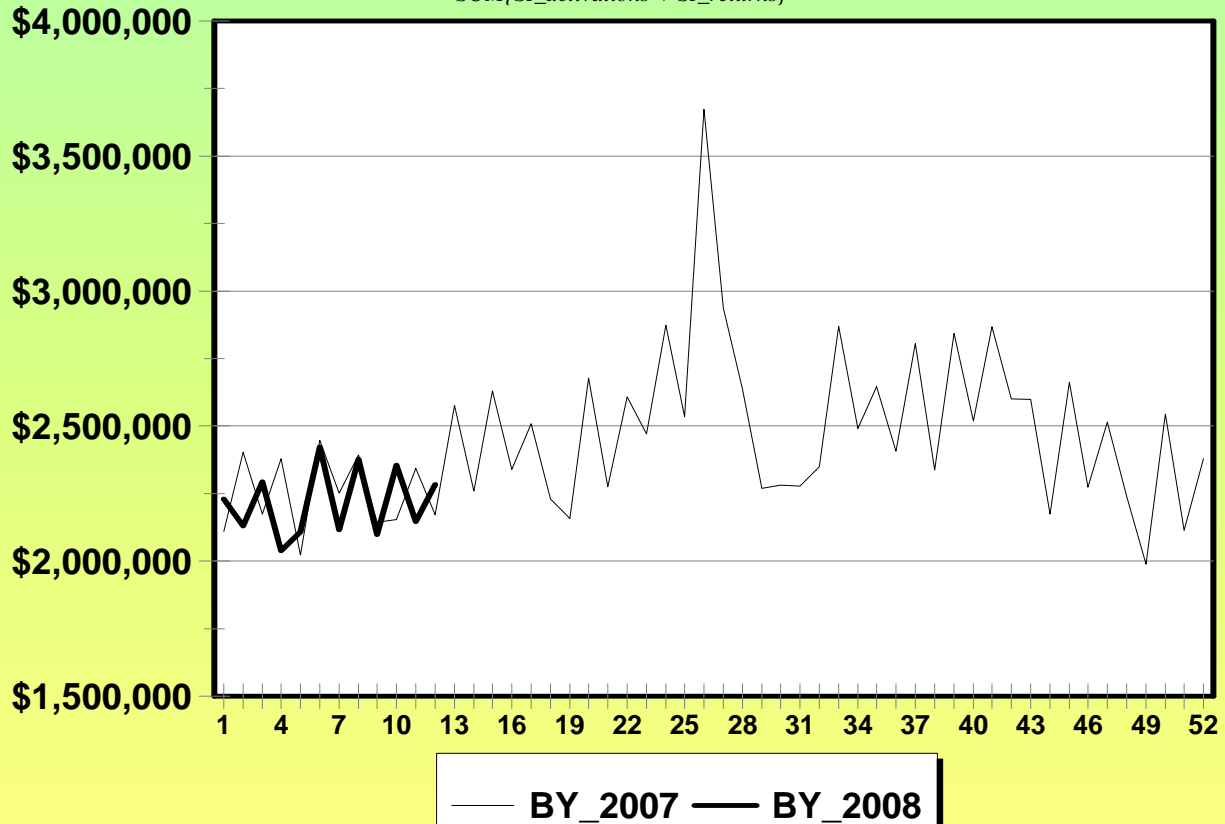
Week Ending: 09/22/07



# Scratch-its

## BY\_2008 -vs- BY\_2007

*SUM{SI\_activations + SI\_returns}*



	This Year	Last Year	Difference	% Change
Last Week	\$2,146,224	\$2,343,578	-\$197,354	-8.42%
Current Week	\$2,284,391	\$2,171,330	\$113,061	5.21%
Year to Date	\$26,599,016	\$26,993,648	-\$394,632	-1.46%

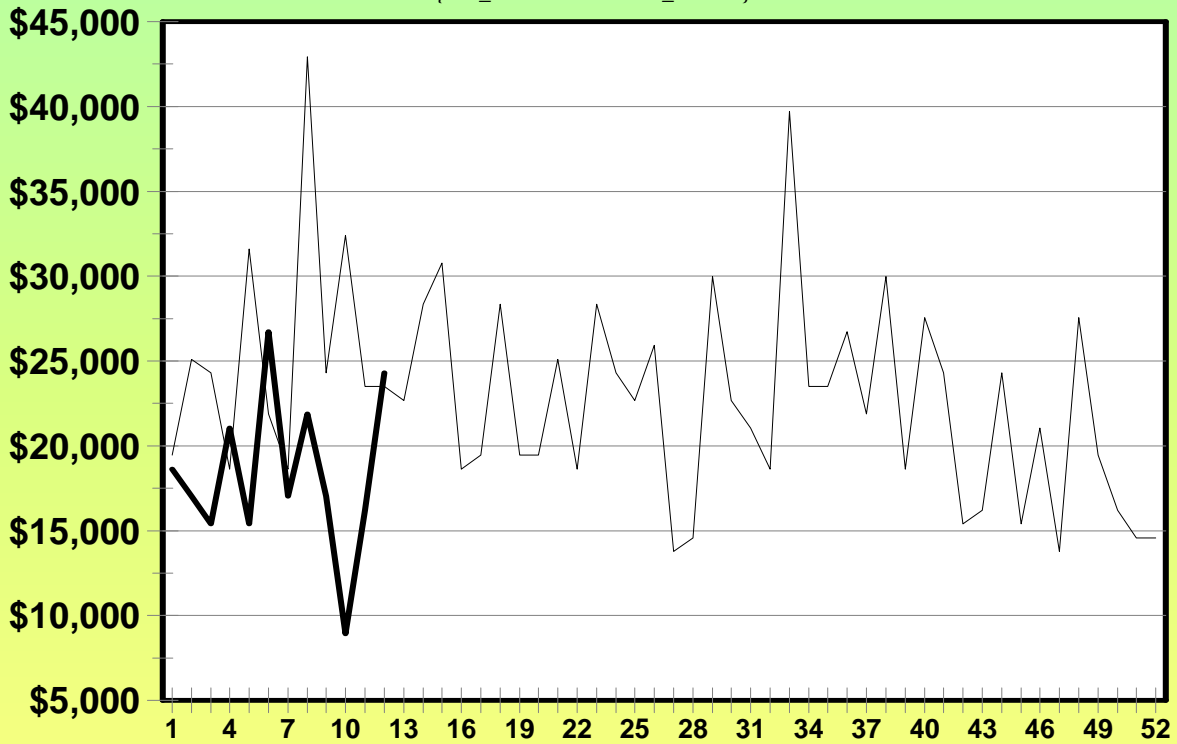
Week Ending: 09/22/07



# Breakopens

## BY\_2008 -vs- BY\_2007

*SUM{BO\_distribution + BO\_returns}*



— BY\_2007 — BY\_2008

	This Year	Last Year	Difference	% Change
Last Week	\$16,200	\$23,490	-\$7,290	-31.03%
Current Week	\$24,300	\$23,490	\$810	3.45%
Year to Date	\$219,510	\$306,180	-\$86,670	-28.31%

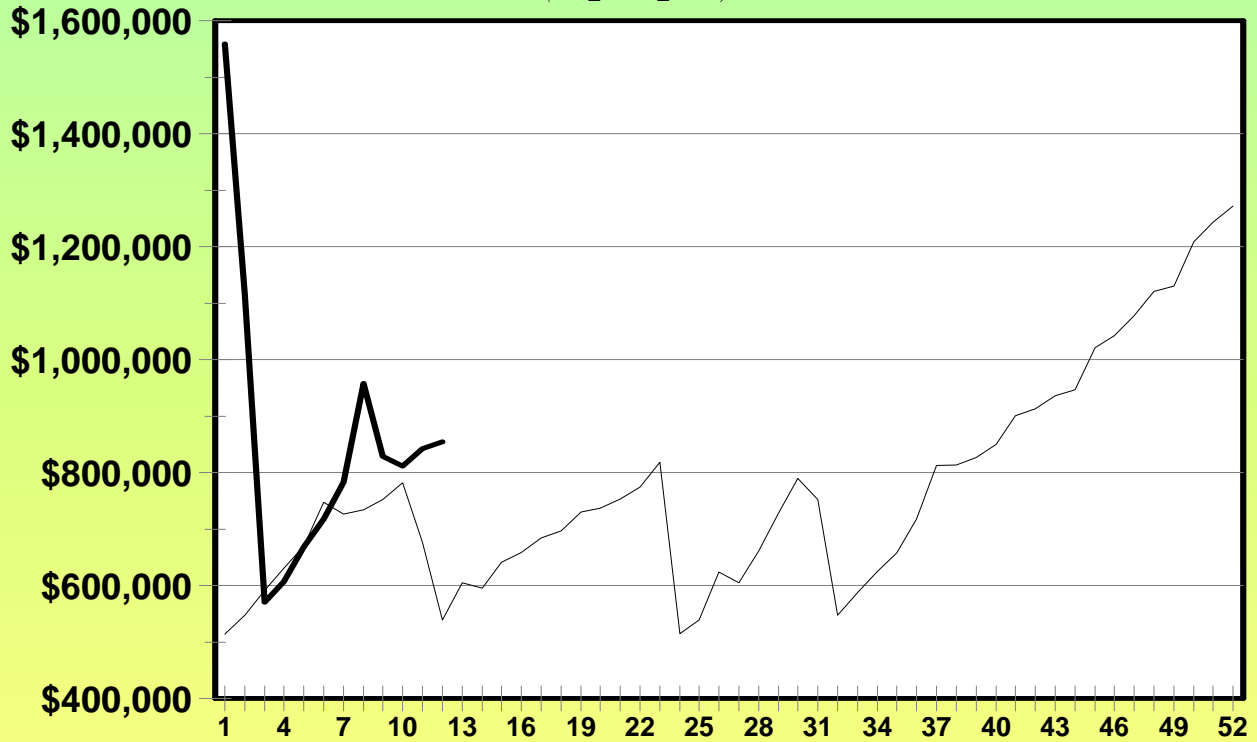
Week Ending: 09/22/07



# Megabucks

## BY\_2008 -vs- BY\_2007

(MB\_Gross\_Sales)



— BY\_2007 — BY\_2008

	This Year	Last Year	Difference	% Change
Last Week	\$842,243	\$676,082	\$166,161	24.58%
Current Week	\$854,596	\$539,171	\$315,425	58.50%
Year to Date	\$10,313,094	\$7,911,399	\$2,401,695	30.36%

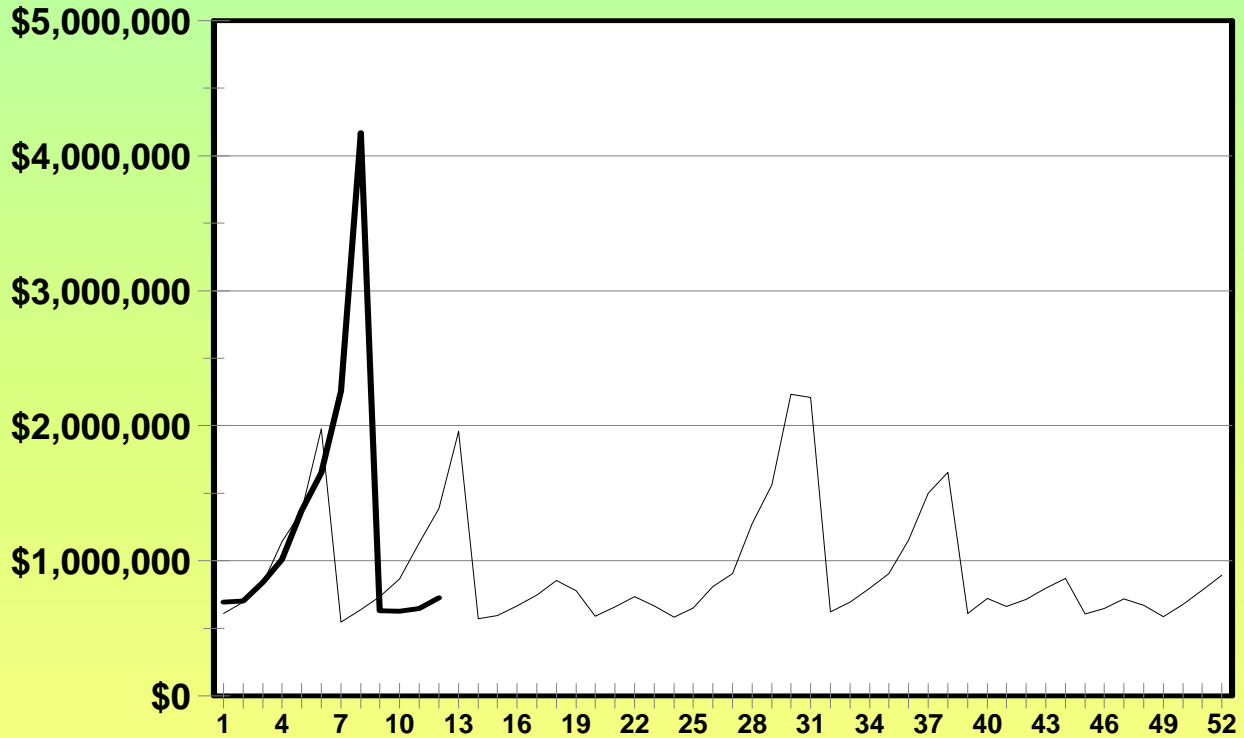
Week Ending: 09/22/07



# Powerball

## BY\_2008 -vs- BY\_2007

(PB\_Gross\_Sales)



— BY\_2007 — BY\_2008

	This Year	Last Year	Difference	% Change
Last Week	\$645,006	\$1,132,687	-\$487,681	-43.06%
Current Week	\$723,956	\$1,385,569	-\$661,613	-47.75%
Year to Date	\$15,327,211	\$11,927,671	\$3,399,540	28.50%

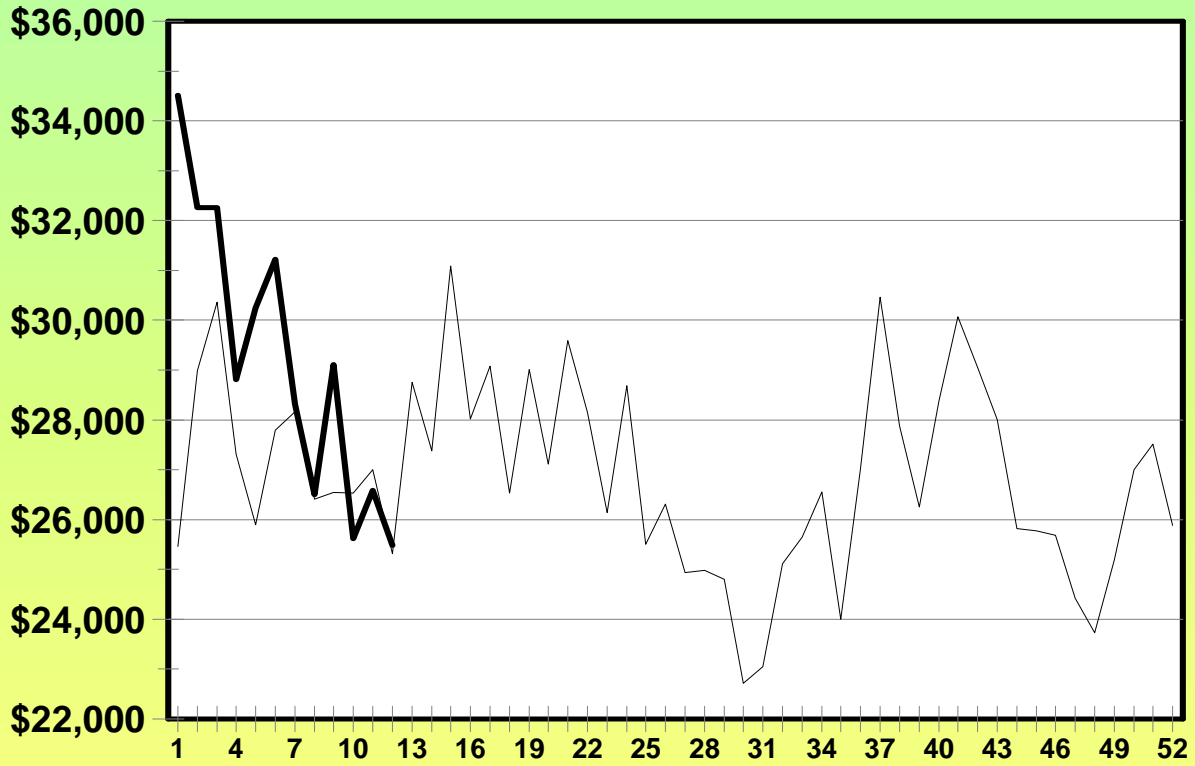
Week Ending: 09/22/07



# Pick 4

## BY\_2008 -vs- BY\_2007

(P4\_Gross\_Sales)



— BY\_2007 — BY\_2008

	This Year	Last Year	Difference	% Change
Last Week	\$26,593	\$27,000	-\$407	-1.51%
Current Week	\$25,487	\$25,315	\$172	0.68%
Year to Date	\$350,941	\$325,794	\$25,147	7.72%

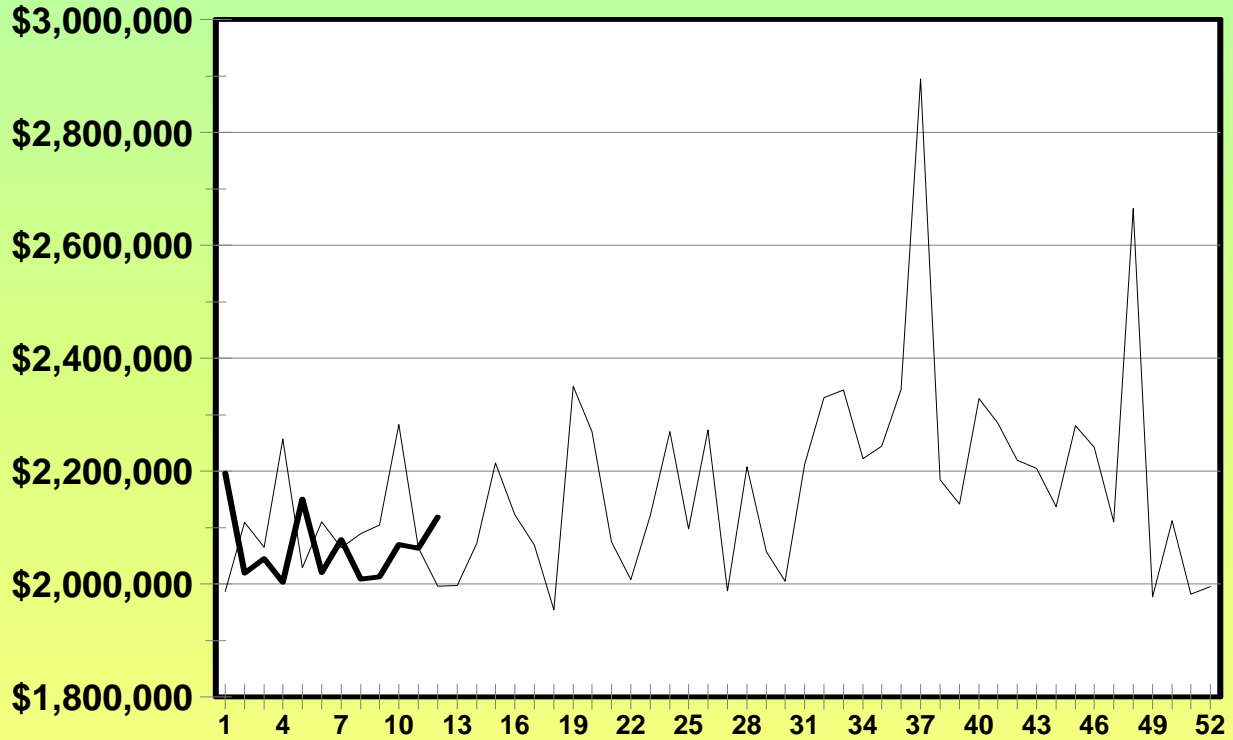
Week Ending: 09/22/07



# Keno

## BY\_2008 -vs- BY\_2007

*(KN\_Gross\_Sales)*



— BY\_2007 — BY\_2008

	This Year	Last Year	Difference	% Change
Last Week	\$2,062,834	\$2,064,345	-\$1,511	-0.07%
Current Week	\$2,118,812	\$1,996,496	\$122,316	6.13%
Year to Date	\$24,784,310	\$25,157,453	-\$373,143	-1.48%

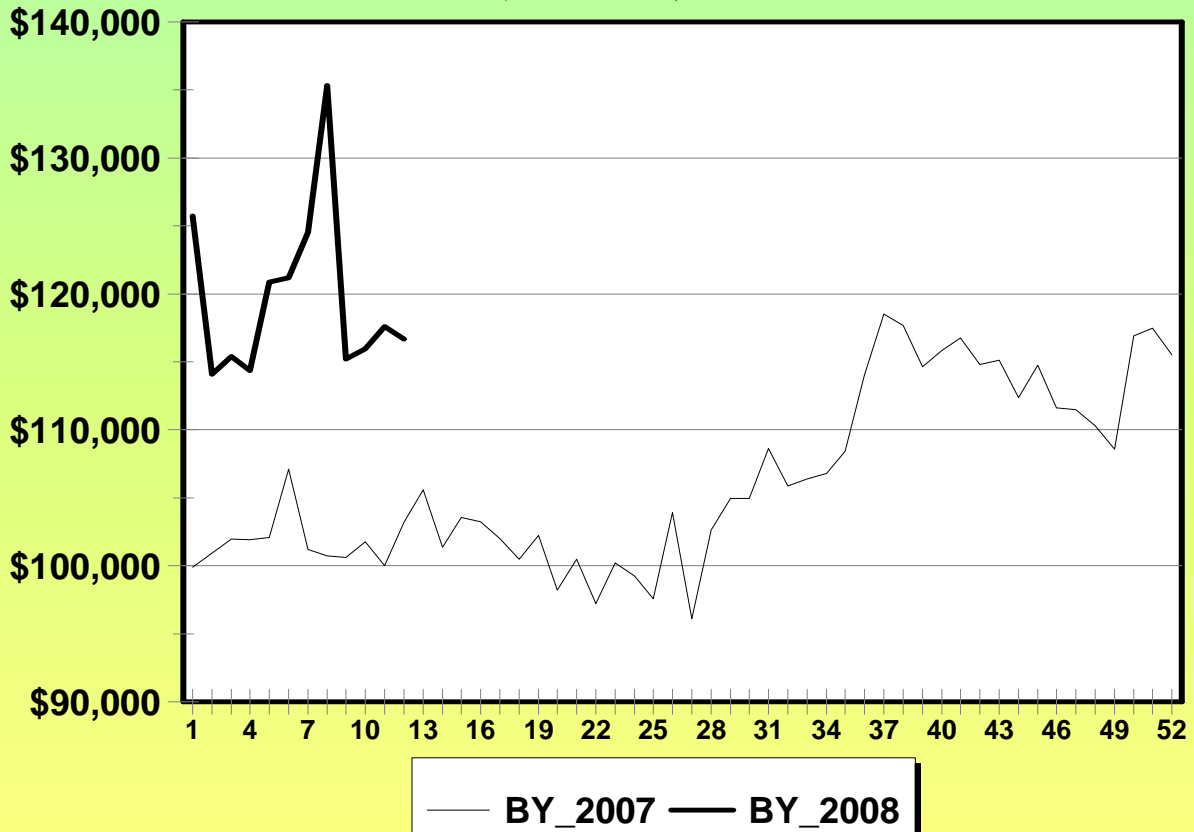
Week Ending: 09/22/07



# Win for Life

## BY\_2008 -vs- BY\_2007

(WL\_Gross\_Sales)



	This Year	Last Year	Difference	% Change
Last Week	\$117,588	\$100,018	\$17,570	17.57%
Current Week	\$116,668	\$103,196	\$13,472	13.05%
Year to Date	\$1,436,844	\$1,221,400	\$215,444	17.64%

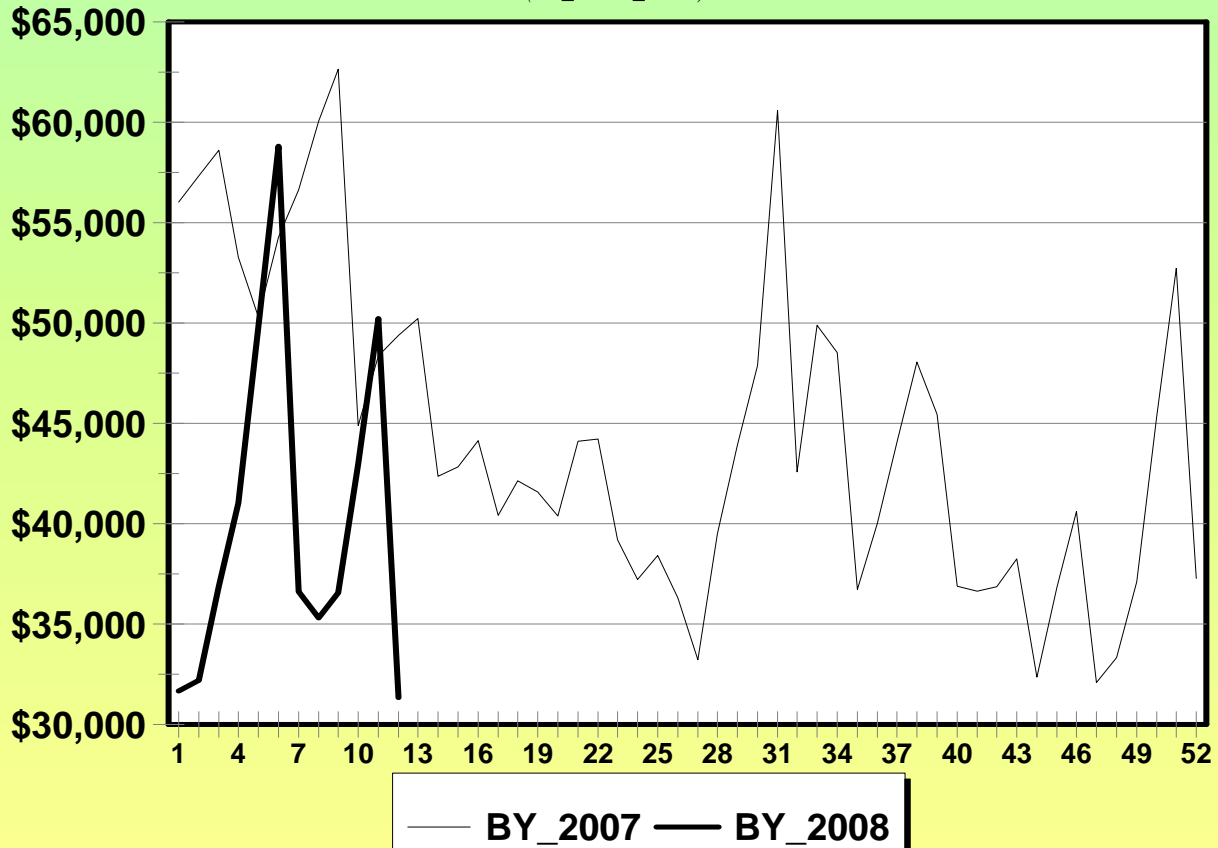
Week Ending: 09/22/07



# Lucky Lines

## BY\_2008 -vs- BY\_2007

(LL\_Gross\_Sales)



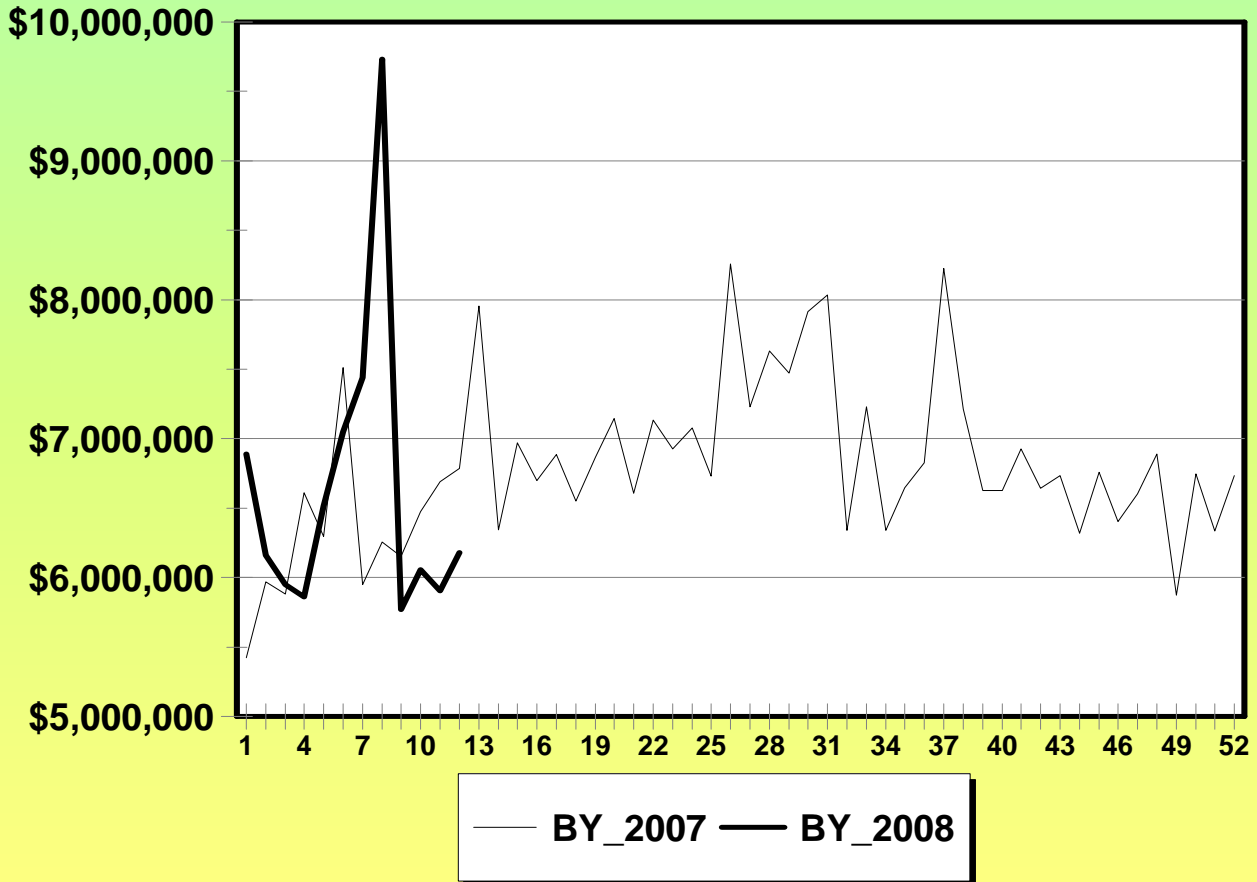
	This Year	Last Year	Difference	% Change
Last Week	\$50,214	\$48,366	\$1,848	3.82%
Current Week	\$31,342	\$49,382	-\$18,040	-36.53%
Year to Date	\$483,390	\$651,826	-\$168,436	-25.84%

Week Ending: 09/22/07



# Traditional Only

## BY\_2008 -vs- BY\_2007



	This Year	Last Year	Difference	% Change
Last Week	\$5,906,902	\$6,690,133	-\$783,231	-11.71%
Current Week	\$6,179,552	\$6,786,630	-\$607,078	-8.95%
Year to Date	\$79,514,316	\$75,998,628	\$3,515,688	4.63%

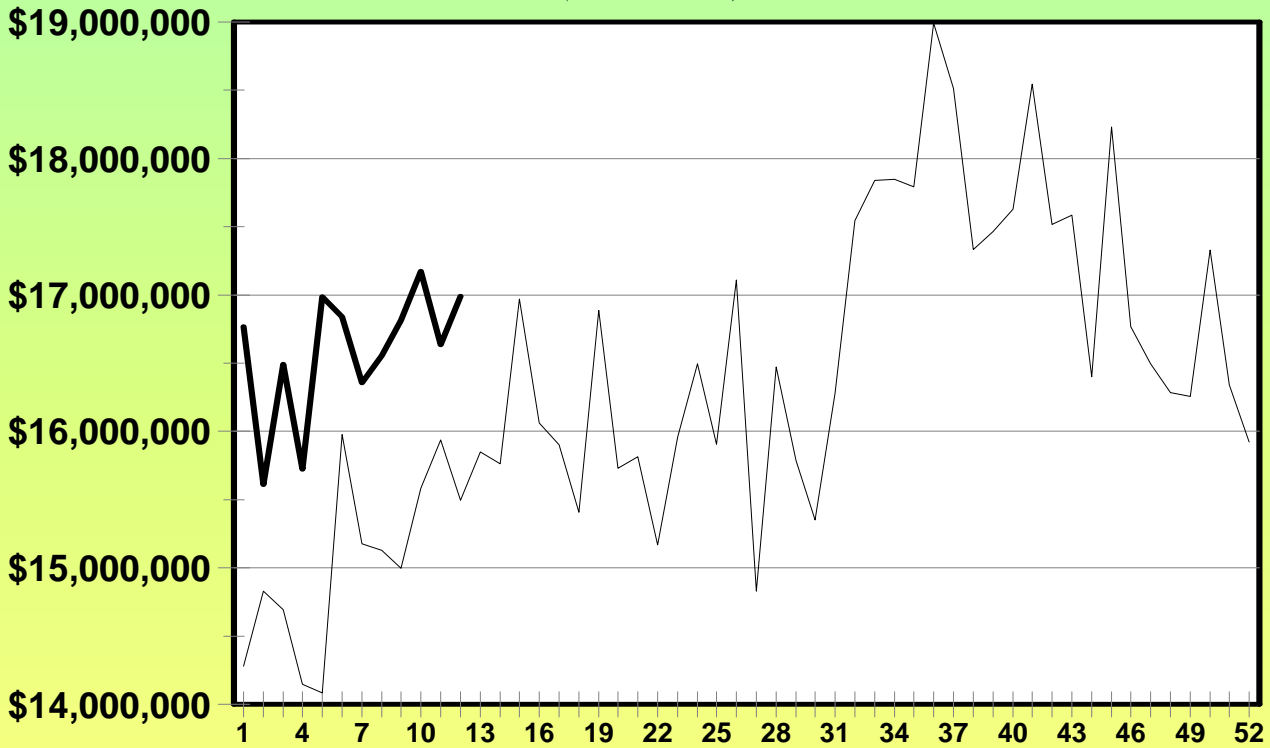
Week Ending: 09/22/07



# Video

## BY\_2008 -vs- BY\_2007

(VL\_Gross\_Sales)



— BY\_2007 — BY\_2008

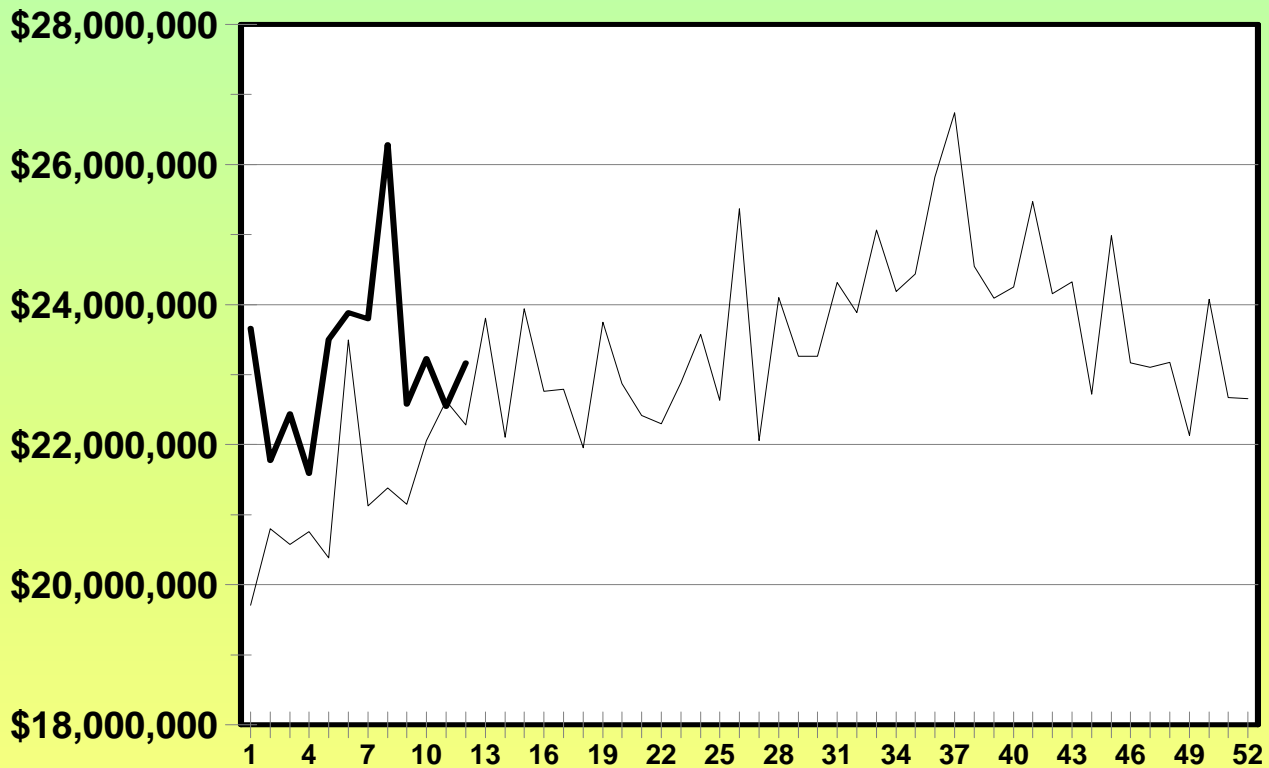
	This Year	Last Year	Difference	% Change
Last Week	\$16,636,270	\$15,935,979	\$700,291	4.39%
Current Week	\$16,989,532	\$15,495,406	\$1,494,126	9.64%
Year to Date	\$198,942,256	\$180,326,823	\$18,615,433	10.32%

Week Ending: 09/22/07



# Total Lottery Sales

## BY\_2008 -vs- BY\_2007



— BY\_2007 — BY\_2008

	This Year	Last Year	Difference	% Change
Last Week	\$22,543,172	\$22,626,112	-\$82,940	-0.37%
Current Week	\$23,169,084	\$22,282,036	\$887,048	3.98%
Year to Date	\$278,456,572	\$256,325,451	\$22,131,121	8.63%